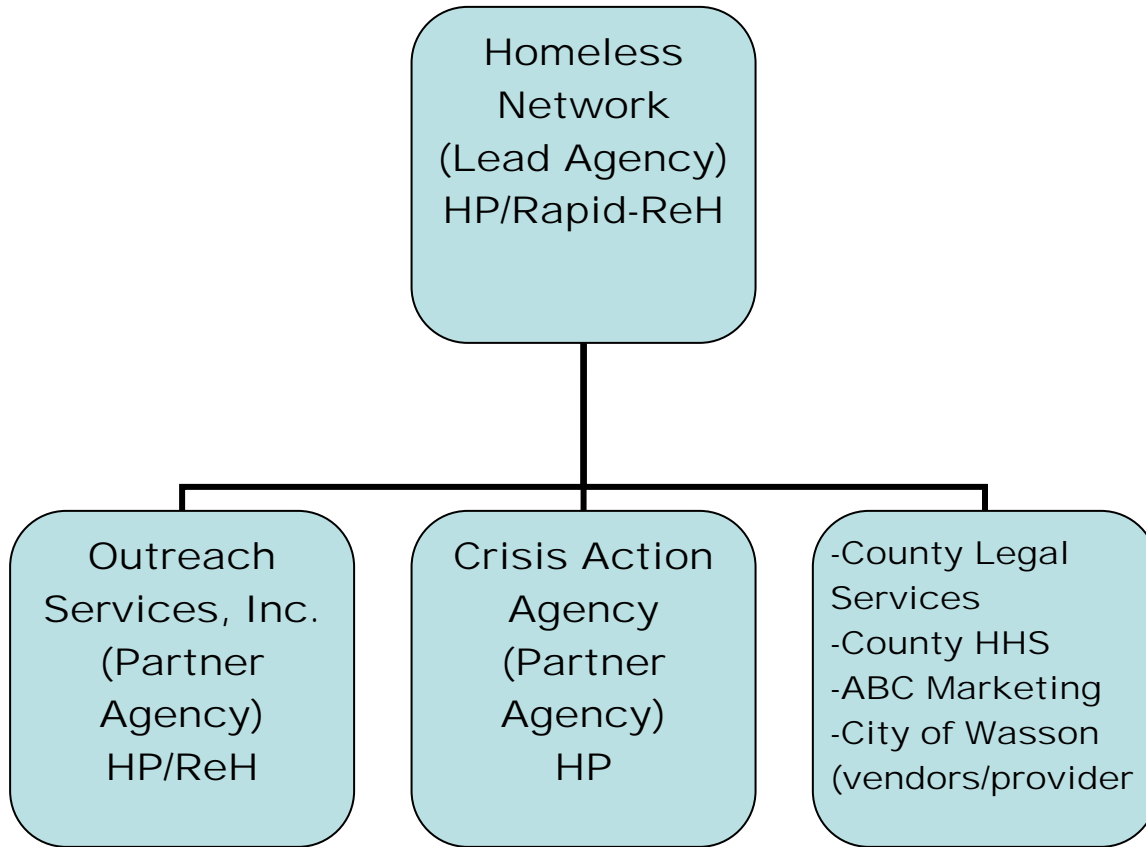


Example: Multi-Agency Applicant Structure



“Homeless Network” --Lead Agency:

- 1. Primary responsibility for the contract Fiscal and Administrative matters with HCD.**
- 2. Provides HP and Rapid Re-Housing Programs with the following budget activities:**
 - Financial Assistance**
 - Housing Relocation and Stabilization Services**
 - Data Collection and Evaluation**
 - Grant Adm.**
- 3. Fiscal Reporting, Quarterly Reports, and Annual Reports to HCD.**
- 4. HMIS Data Collection/Training**

“Outreach Services, Inc.—Partner Agency:

- 1. Provides a significant portion of the HPRP eligible activities under the Lead Agency.**
- 2. Provides HP and Rapid Re-Housing Program with the following budget activities:**
 - Financial Assistance**
 - Housing Relocation and Stabilization Services**
 - Data Collection and Evaluation**

“Crisis Action Agency”—Partner Agency:

- 1. Provides a significant portion of the HPRP eligible activities under the Lead Agency.**
- 2. Provides HP services only with the following budget activities:**
 - Financial Assistance**
 - Housing Relocation and Stabilization Services**
 - Data Collection and Evaluation**

“County Legal Services”—Vendor/Services Provider

- 1. Provides eviction assistance to Lead Agency and Partner Agencies under the Lead Agency and Partner Agency approved budgets.**

“County Health and Human Services”—Vendor/Service Provider

- 1. Provides client initial consultation and screening and referral to Lead Agency and Partner Agencies under Lead Agency and Partner Agency budgets.**

“ABC Marketing”—Vendor/Service Provider

- 1. Provides Marketing materials and conducts presentations to selected target groups under the Lead Agency and Partner Agency budgets.**

“City of Wasson”—Vendor/Service Provider

- 1. Provides home inspections for properties inside the City of Wasson under the Lead Agency and Partner Agency budgets.**