

# **SUBMISSION PORTAL OVERVIEW**

**Is the Application a "Test" Submission?**

No, this is my official Submission.

# Part 1: ADMINISTRATIVE INFORMATION

## Application Window

This application is being submitted in the following application window:  
Window #2, 3/1/2023 - 4/30/2023

## Eligible Applicant

Select the eligible applicant's jurisdiction type.  
City

What is the name of the city or county?  
City of San Diego

## Implementing Organization

Implementing Organization  
City of San Diego

Specific Unit or Office Within the Implementing Organization  
Homelessness Strategies and Solutions Department

Implementing Organization's Address  
202 C Street, MS 8A

<b>City</b> San Diego	<b>Zip Code</b> 92101	<b>County</b> San Diego
--------------------------	--------------------------	----------------------------

Implementing Organization's Tax ID  
Number  
95-6000776

## Project Director

**Name**  
Sarah Jarman

**Title**  
Director

**Phone**  
(619) 385-6963

**Email**  
SJarman@sandiego.gov

## Grant Administrator

**Name**  
Ketra Carter

**Title**  
Senior Program Manager

**Phone**

**Email**

(858) 789-7127

ketrac@sandiego.gov

## Contact Person for Application

**Name**

Kimberlee Zolghadri

**Title**

Program Coordinator

**Phone**

(619) 533-3824

**Email**

KZolghadri@sandiego.gov

## Authorized Representative

**Name**

Kristina Peralta

**Title**

Deputy Chief Operating Officer

**⚠️ This Application uses character limits ⚠️**

**Reaching these limits is not required. Competitive responses may fall well short of these limits.**

---

## **Part 2: PROPOSAL OVERVIEW**

### **People Served**

**Number of people currently residing in prioritized encampment site**

65

**Of people currently residing in prioritized encampment site, how many will be served by this proposal?**

65

**Given the potential for inflow of people into the prioritized encampment site, how many people are projected to be served across the entire grant period?**

90

**Of people projected to be served across the entire grant period, number of people projected to transition into interim shelters**

30

**Of people projected to be served across the entire grant period, number of people projected to transition into permanent housing**

60

**Is the prioritized encampment site part of a larger encampment area?**

No

### **Encampment Information**

**1. Briefly describe the characteristics of the people residing within the prioritized encampment site. The description must include demographics and may include household compositions, disabilities, and projected service and housing needs. (1500 character limit)**

The identified encampment (Corridor) is located within the City of San Diego along the Interstate 15 (I-15) corridor from Adams Avenue south to Thorn Street and currently includes approximately 65 persons experiencing homelessness. Due to the complex nature of the location, demographics of the unsheltered individuals residing at the Corridor encampment include the following characteristics: chronically homeless

single adults with a one-third reporting active substance use; one-half identifying Black, Indigenous, and People of Color (BIPOC); and one-third reporting as 55 years of age or older. This population is also service disconnected with limited or no access to emergency housing solutions, healthcare services, transportation/mobility services, and food resources as the Corridor encompasses areas that are restricted by Caltrans jurisdiction.

Due to the vulnerability of the population and lack of access to resources, expeditiously connecting this population to critical and customized support is essential, including trauma-informed outreach and engagement, transportation, linkages to health support, access to benefits such as CalFresh and General Relief, bridge housing with case management, and permanent or long-term housing delivered in a Housing First, low-barrier manner that also includes housing stability support, landlord engagement, deposit assistance, and rental assistance.

**2. Briefly describe physical characteristics of the prioritized encampment site in which the people you are proposing to serve are residing. The description must include the specific location, physical size of the area, the types of structures people are residing in at the site, whether vehicles are present, and any other relevant or notable physical characteristics of the site. (1000 character limit)**

The priority encampment is located along the I-15 corridor from Adams Avenue south to Thorn Street and currently includes approximately 65 persons experiencing homelessness transition between both City of San Diego and State right-of-way. This string of encampments are along some terrain that is diverse and comprised of thick brush, chain link fencing separations between sidewalks, and active interstate freeway. This corridor has a significant number of encampment groupings, with a total of approximately 15 encampments. These encampments are mainly comprised of one to six individuals, many residing together for safety and protection. Encampment structures are primarily camping tents along sidewalks, cul-de-sacs, and neighborhood public parks with some groupings comprised of up to three to four tents in one location.

**3. Why is this particular encampment site being prioritized? (1000 character limit)**

Prioritization of this encampment is due to the significant health and safety risks for those residing within this location, members of the public traveling along this area, and the community as a whole. Freeway rights-of-way are highly dangerous locations for human habitation to co-exist with transportation networks, this encampment transcends both freeway rights-of-way, public parks, and is adjacent to primary public transit hubs. Significant risks include people versus vehicle collisions; fires in areas with limited immediate access; electrocution from accessing power grids; air pollution-related illnesses such as increased risk of asthma, pneumonia and other respiratory illnesses; and exposure to viruses and bacteria from unsafe access to basic hygiene needs. There are also considerable risks to the emergency rescue teams that evacuate people who are stranded or trapped when fires burn out of control.

**Attachment: Map**

ERF-2-R\_Map\_City of San Diego.pdf

**4. Is the prioritized site on a state right-of-way?**

Yes - partially

**Attachment: Caltrans Letter of Support**

## **Proposal's Outcomes**

**5. What are the outcomes this proposal seeks to accomplish by the grant close (6/30/2026)? If funded, what are the primary activities you are planning to implement to achieve the proposal's outcomes? (1000 character limit)**

The City seeks to serve approximately 90 individuals throughout the entire term of the grant and connect an estimated 60 individuals to permanent or long-term housing. The grant will support efforts to provide

targeted interventions tailored to meet each individual's unique needs. Specifically, the grant will support: trauma-informed outreach and engagement; transportation; linkage to health support; access to public benefits; access to flexible funding; bridge housing with case management; and permanent or long-term housing delivered in a Housing First, low-barrier manner that includes housing stability support, landlord engagement, deposit assistance, and rental subsidies. Bridge and permanent or long-term housing will be matched with the right level of support and services to ensure those housing opportunities are stable and successful. The City will also leverage existing resources such as outreach, basic needs assistance, and healthcare resources as part of the grant program.

**6. How will the applicant measure progress towards the proposal's outcomes? (1000 character limit)**

Proposed outcomes include the outreach and engagement of 90 unsheltered persons, placing an estimated 30 individuals into bridge housing, and placing 60 individuals into permanent or long-term housing. To ensure progress the City of San Diego will (1) establish short (6 months) and long-term (12, 24, 36 months) goals with deliverables and deadlines and (2) track progress on these deliverables and deadlines on a daily, weekly, and monthly basis through reporting tools to include Community Information Exchange (CIE) and Homeless Management Information System (HMIS). Feedback strategies will include persons with lived experience, including those being served through the grant; direct service providers; and outreach staff. The City of San Diego will closely monitor program data to make informed decisions to address challenges and implement changes to course correct, if needed.

**7. Are there any local ordinances, resources, or other factors that may hinder achieving the proposal's outcomes? If so, how will the applicant navigate these challenges? (1000 character limit)**

While there is currently no local ordinance in place, the City is currently exploring an amendment to the San Diego Municipal Code related to unauthorized camping or encampments on public property. The proposed ordinance provides guidelines to ensure the life, health, and safety of all individuals in the City, recognizing that encampments on certain public lands can pose significant health and safety hazards for individuals experiencing homelessness and the community at-large. The Homelessness Strategies and Solutions Department (HSSD) has engaged in conversations with other departments that would be involved in this grant to make them aware of this opportunity and ensure compliance with the objective of the grant. HSSD is proactively coordinating with the departments involved in its award of ERF-2-L funding and will continue to collaborate with all necessary departments to overcome any potential challenges if awarded funding through this round.

**8. Is this proposal a standalone project or part of a larger initiative?**

Larger initiative

**8. a) How would this larger initiative be categorized?**

Part of a larger project for encampments in general

**Please describe. (1000 character limit)**

The City of San Diego's proposed ERF-2-R project directly aligns with the City of San Diego's Coordinated Street Outreach Program (CSOP) efforts. The City has several types of street-based outreach teams operating on a daily basis. Outreach teams work to build relationships with individuals experiencing homelessness. The teams use a person-centered, compassionate approach to resolve homelessness through the offer of services tailored to the specific needs of individuals. Additionally, CSOP often conducts focused outreach events in areas identified as having large congregations of people experiencing homelessness.

During the multi-agency events, outreach teams canvass an area to engage unsheltered folks and connect them to supportive services. Access to case management, health education, public benefits, mental health and substance abuse treatment, primary care referrals, and access to hygiene kits, transportation and

basic essentials are all offered to people in the area.

## **Part 3: IMPLEMENTATION**

### **Core Service Delivery and Housing Strategies**

**9. Describe the proposed outreach and engagement strategy, case management, and / or service coordination for people while they are continuing to reside within the encampment site. Quantify units of service to be delivered including the ratio of staff to people served, frequency of engagement, and length of service periods. (2000 character limit)**

The outreach and engagement, case management, and service coordination strategies will include the utilization of staff that are experienced, well-trained, and empowered to connect participants to critical housing and services needed in a timely manner to end their experience of homelessness. These critical supports include bridge and permanent or long-term housing, flexible funding, transportation, and other customized resources and services. Key daily and weekly efforts that will be deployed by these essential staff include:

- 1) Management and utilization of an already existing By-Name-List encompassing all encampment residents to best scale resources, tailor interventions, and track outcomes. This list will be updated at each individual engagement;
- 2) Maintaining a consistent presence along the Corridor to build trust, rapport, and to foster more willingness to take the next steps to receive services and housing;
- 3) Access to specialized flexible funding to reduce barriers to housing, help expedite housing placements, increase housing stabilization, and fill critical gaps such as securing vital identification documents, transportation to medical appointments, monitoring available units, vehicle repair, and pet-related needs;
- 4) Knowledge and utilization of diversion and problem-solving strategies to link participants to safe housing options such as reunification with family and shared housing opportunities; and
- 5) Assistance with removal of possessions and mitigation of the environmental damage when individuals are willing to relocate. The City can leverage existing transitional storage facilities for safe keeping of individuals' possessions.

The ratio of staff to participants will be no more than 1:15. Already established San Diego Continuum of Care Street Outreach Standards will be used to ensure approaches are standardized and consistent.

**10. Describe the role of Coordinated Entry in the context of this proposal and how Coordinated Entry policies or processes will support and / or hinder the implementation of this proposal. (1000 character limit)**

HMIS and the Coordinated Entry System (CES) will be utilized to collect critical client-specific information, assess clients for chronic homelessness, prioritize supportive services in alignment with vulnerabilities, and serve as the initial point of entry for consideration to available housing resources. CES will serve to facilitate encampment resident linkages to permanent housing resources and services, including permanent supportive housing and rapid rehousing as these resources become available. Supportive housing resources through the Coordinated Entry System are limited and identifying long term and/or permanent housing options with appropriate levels of support for clients will require creative use of funding and leveraging of resources. When a match has been identified, staff will assist in locating the individual as well as organizing and arranging transportation and connection to the housing opportunity.

**11. Please describe the interim shelter and permanent housing opportunities proposed to support this proposal and provide evidence of the applicant's demonstrated ability and commitment to deliver permanent housing for people residing in the prioritized encampment. (2000 character limit)**

Housing placement strategies will leverage and align with available opportunities through the regional Coordinated Entry System. The Landlord Engagement and Assistance Program (LEAP), operated by the San Diego Housing Commission, will be leveraged to provide incentives such as holding fees, deposit assistance, and a contingency fund for damages in conjunction with shallow subsidy rental assistance and housing-related expenses outside of the Coordinated Entry System. LEAP has extensive experience in



successfully working with city landlords to assist households experiencing homelessness to lease units within the private market. Since its implementation, LEAP has supported over 4,300 housing opportunities for households experiencing homelessness.

For individuals who may be ineligible for some housing options due to undocumented status, history of involvement with the criminal justice system, and those subject to registration requirements, customized and problem-solving efforts will be pursued to locate suitable and reasonable housing solutions. The City also funds several temporary shelters which may be leveraged in the interim while trying to match a client to long-term housing. The temporary shelters will provide a safe space for individuals to sleep, in addition to access to showers, restrooms, basic needs assistance, and resource referrals.

**12. Describe how this proposal is tailored to meet the needs and preferences of people residing within the prioritized encampment. (1500 character limit)**

The grant program by design embeds the voices of persons with lived experience of homelessness; ensures all program efforts are client-centered, trauma-informed and low-barrier; and provides opportunities for on-going feedback from participants. The components of this proposal are designed around the learnings and experiences of our Coordinated Street Outreach Program, the effective delivery of services through Community Coordinated Access to Resources and Engagement (CARE) efforts, and guided by the United States Interagency Council on Homelessness' 7 Principles for Addressing Encampments (link: <https://www.usich.gov/tools-for-action/7-principles-for-addressing-encampments/>).

All components of the program are meeting individuals where they are by ensuring the program deliverables are customized to the needs of each person (client-centered), set up to understand the role of trauma and its impact on participants (trauma-Informed), and designed to eliminate as many barriers to housing as possible (low-barrier). The program will embed various opportunities for individuals in the Corridor to provide on-going feedback throughout the term of the grant including but not limited to verbal feedback and survey/evaluation tools.

**Table 1: Projected Living Situations Immediately Following the Encampment**

<b>Briefly Describe Each Projected Living Situation Immediately Following the Encampment</b>	<b>Is This Permanent Housing?</b>	<b>Quantify The Capacity (e.g., number of beds/units, frequency of bed/unit availability)</b>	<b>Prioritized or Set-Aside for ERF-2-R?</b>	<b>Is this living situation funded by ERF-2-R and / or Leveraged Funds?</b>	<b>% of Served Persons Projected to Fall Within This Living Situation</b>
Interim Sheltering: bridge housing - hotel/motel stays	No	16	Set-Aside for ERF-2-R	ERF	18
Delivery of Permanent Housing: Local Rental Housing Subsidy - rental assistance voucher	Yes	52	Set-Aside for ERF-2-R	ERF	58

administered through City Public Housing Authority

Interim Sheltering: emergency shelter	No	10	Neither	Leveraged	11
Delivery of Permanent Housing: rapid rehousing and/or Permanent Supportive Housing matched through Coordinated Entry System	Yes	5	Neither	Leveraged	5
Remain unsheltered	No	7	Neither	N/A	8

**Table 2: Projected Housing and Service Pathways to Permanent Housing**

Describe Projected Housing and Service Pathway to Permanent Housing	Quantify the Capacity of the Housing and Service Pathway	Is this Housing and Service Pathway Funded by ERF-2-R and / or Leveraged Funds?
Interim Sheltering: Bridge housing with case management and housing navigation	16	Leveraged
Permanent Housing: Local Rental Subsidy Vouchers with Housing Stability Case Management Services	26	ERF
Housing Support: Flexible Housing Pool: Landlord incentives	26	Leveraged
Customized Supports: Flex Funding	16	Leveraged

**Table 3: Strategies to Mitigate Displacement**

Strategy	Is this Strategy Funded by ERF-2-R and / or Leveraged Funds?

Offer and provide an adequate supply of interim and permanent housing solutions	Both
Embed and leverage critical supports such as deposit and utility assistance	Both
Apply housing first and low barriers strategies to all interventions	Both
Ensure on-going and frequent engagement with individuals, providing custom supports and resources through the By Name List	Both
Utilization of diversion and problem-solving strategies to link participants to safe housing options such as reunification with family and shared housing opportunities.	Both

**Table 4: Strategies to Mitigate Returns to Unsheltered Homelessness**

Strategy	Is this Strategy Funded by ERF-2-R and / or Leveraged Funds?
Case management services embedded into bridge housing	Both
Housing stability services embedded in permanent housing post placement	Both
Link individuals to critical supports such as mental health counseling, health care, employment training, peer support counselors, recovery groups	Leveraged
Promote shared housing opportunities to encourage support systems and financial stability	Both
Coordination across systems to immediate problem solving and triage individuals that are at-risk of losing their housing	Leveraged
Access to flex funding to provide intervention to resolve potential housing challenges	ERF
Ensure housing resources are low-barrier and housing first, eliminating zero and high tolerance housing/rental policies	Both

**13. Describe how this proposal considers and plans for the dynamic nature of encampments including potential inflow of people into the geographically served areas. (1000 character limit)**

The City’s proposed program will embed a number of strategies to manage the dynamic nature of encampments including the potential inflow of people. Strategies include frequent outreach efforts to continuously connect persons experiencing homelessness to resources and services. Outreach efforts not only include those funded through this grant but also coverage through the City’s Coordinated Street Outreach Program which can be leveraged to support those that remain and any new persons locating to the site. This effort includes utilization of and updating the By-Name-List as well as tracking participant outcomes and potential returns through the Homeless Management Information System. In addition, the City will ensure timely clean-up measures to impacted neighborhood parks and state right-of-way locations to return those parks and locations to their intended use, while respecting persons still residing at the location.

**14. Describe how this proposal will support individuals with continued access to and / or the storage of their personal property. (1000 character limit)**

Individuals residing in the encampment will have access to storage for personal property through one of the City of San Diego's existing transitional storage facilities. The City currently funds three transitional storage facilities serving individuals experiencing homelessness. This critical resource will provide a safe place to keep vital documents and belongings as participants attend to essential needs, which may include connecting to housing opportunities, seeking employment, attending classes such as financial literacy, meeting with service providers, seeking medical care, or other activities such as accessing cleaning or washing facilities.

**15. Describe how this proposal will support individuals with service animals and/or pets. (1000 character limit)**

Individuals residing in the Corridor encampment will have access to flexible funding intended to assist in engagement activities and support housing access and stability including customized support for service animals and pets. This will be facilitated through an already established community partner. Specific supports may include, but are not limited to, pet-related license renewals, veterinarian fees, animal food, pet deposits for hotel and rental units.

## **Budget and Resource Plan**

**16. State the total amount of ERF-2-R funds requested.**

\$3,156,000.00

**17. State the estimated dollar value of secured, non-ERF-2-R resources that will help meet this proposal's outcomes.**

\$617,900.00

**18. Identify and describe these non-ERF-2-R resources. (1000 character limit)**

The ERF-2R will be supported with the following non-ERF resources:

- 0.10 FTE of Senior Program Manager time (\$35,100)
- 0.20 FTE of Street Outreach Program Coordinator time (\$31,200)
- 0.10 FTE of Program Coordinator for supervision of facilities (\$15,600)
- Medical Street Outreach Contract which will provide direct medical street-based outreach to encampment residents (\$150,000)
- Community Care Event program, which includes staffing, services, and resources provided from 25 different partners over a three-day period in areas of high need (\$110,000).
- Landlord Engagement and Assistance Program (\$150,000)
- City funded shelter (\$126,000)

**19. Describe how the proposal is a prudent and effective use of requested funding relative to the number of people it seeks to serve and the types of services and housing to be provided in the proposal. Include an explanation of how the requested ERF-2-R amount was determined. (1000 character limit)**

The investments reflect an estimated 52 participants receiving housing subsidy across 18 months. While the subsidy level and duration may vary based on individuals' needs and availability of housing, the program factors in an average subsidy of \$1,100 per individual, per month, plus the costs of contracted housing

coordination staff to facilitate payments for subsidized housing and bridge housing. Actual monthly costs will vary per client. The budget includes case management and supportive services required by 3.0 FTE to work continuously with 52 individuals as they transition from bridge housing to subsidized housing and ensure they have the continuous support needed to stabilize into permanent housing.

Personnel is based on an appropriate level of effort for City staff overseeing the program to coordinate outreach amongst partners. The City is leveraging 0.4 FTE across three positions for support. Other personnel costs are incorporated into the individual operator contracts.

**Attachment: Standardized Budget**

ERF-2-R, Budget\_City of San Diego\_04.23.xlsx

## Key Entities and Staff

**20. First, describe the implementing organization and specific unit or office within the implementing organization that would administer ERF-2-R. Then, describe their role and primary responsibilities for this proposal. Finally, if these entities have managed a complex homelessness project or grant, describe how those experiences informed this proposal. (1500 character limit)**

The City of San Diego would be the implementing organization for this grant. Specifically, the Homelessness Strategies and Solutions Department (HSSD) will serve as the lead on this effort. HSSD will administer the entire grant from start to finish. The department will serve as lead in selecting service providers to perform contracted out services, including outreach and administration of housing funds. HSSD will be responsible for ensuring all activities are implemented in a timely manner. In addition, HSSD will consistently monitor data, track progress, and propose programmatic changes as necessary to ensure services are delivered as efficiently and effectively as possible.

HSSD serves as the lead department responsible for carrying out homelessness projects on behalf of the City of San Diego including programs such as emergency shelters, safe parking, and the Coordinated Street Outreach Program. Moreover, HSSD has extensive experience overseeing homelessness grants including the Homeless Emergency Aid Program, all rounds of the Homeless Housing, Assistance, and Prevention program, Family Homelessness Challenge grant, and Encampment Resolution Funding Program, Round 2 Lookback. As the lead on these grants, HSSD is responsible for implementing the programs, ensuring compliance with the grant agreement, tracking progress, collecting data, and providing quarterly and annual reports to the grantor.

**Table 5: Key Staff**

Title	Currently Filled Position?	FTE of Staffing for This Proposal	Funded by ERF-2-R and / or Leveraged Funds?	Brief Description of Duties
Program Manager – City of San Diego	Yes	0.20	Both	Grant oversight (application, reporting, outcome management)
Program Coordinator - City of San Diego	Yes	0.30	Both	Supervision of outreach staff; management of the By-Name-List; coordination of CES

Program Coordinator - City of San Diego	Yes	0.10	Leveraged	Supervision of facilities
Program Manager - City of San Diego	Yes	0.10	Both	Ensure contractor outcomes, performance, and fiscal reporting
Outreach Staff – [Contracted Operator Staff]	No	6.0	ERF	Outreach staff engaging with persons in encampment, referrals to housing and services
Street Medicine Field Team [Contracted Operator Staff]	Yes	5.0	Leveraged	Provide mobile medical care
Housing Specialist – [Contracted Operator Staff]	No	0.20	ERF	Supervision of Housing Specialist for the Long-Range Sustainability Plan.
City of San Diego Public Housing Authority	No	0.60	ERF	Receive and process shallow subsidy pool, coordinate unit inspections, and landlord engagement

**21. First, describe key partners that will collectively pursue the proposal's outcomes. Then, describe their role and primary responsibilities for this proposal. Finally, if these entities have managed a complex homelessness project or grant, describe how those experiences informed this proposal. (1500 character limit)**

The partners below are experienced in managing complex projects and grant applications serving persons experiencing homelessness through local, state, and federal funding sources. Their expertise in this area has informed the strategies and oversight of this grant application and processes.

**Key Partners:**

City of San Diego: Encampment outreach, facilitating connections with the Coordinated Entry System and management of a By Name List.

Caltrans: Providing consistent, frequent outreach coordination to encampments on State Right of Way

San Diego Housing Commission: Providing immediate flexible funding assistance to pay for critical expenses to reduce barriers to housing.

County of San Diego: Self Sufficiency Programs

Regional Taskforce on Homelessness (RTFH): RTFH is the San Diego Continuum of Care and oversees the Coordinated Entry System to manage the list of people prioritized to be referred to available housing resources. All individuals will be enrolled in Community Que and considered according to prioritization.

(2-3) TBD Social Service providers: Outreach and housing stability services for newly housed participants

Healthcare In Action: Healthcare, mental, and behavioral health resources leveraging Cal-AIM

**22. Describe specific examples of how Local Jurisdiction(s) and the CoC have collaborated on the design and implementation of this proposal. (1000 character limit)**

The City of San Diego has discussed this grant opportunity with the County of San Diego and Caltrans. Both agencies have provided their support of the proposed project. In addition, the City has begun

discussions with the local public housing authority to discuss the potential collaboration to work together on delivering housing options if this project is awarded. Lastly, the City has collaborated and received support from the City's Council President's Office whose council district is where this encampment is located.

#### **Optional Upload: Evidence of Cross-Jurisdictional Collaboration**

LOS\_County of San Diego.pdf

LOS\_Lived Experience Advisers.pdf

#### **23. Identify any entities that have a right to and/or control of the property upon which the encampment site resides and discuss whether each of these entities committed allowing the implementation of this proposal. If they have not committed, please explain how you have or plan to engage with this entity to implement your proposal. Additionally, describe how you collaborated with Caltrans on your program design, implementation plans, and timeline. (1000 character limit)**

The identified encampment includes State right-of-way and City of San Diego property. The City of San Diego has engaged with Caltrans and received their support of this funding opportunity. The City currently funds an outreach program with a local service provider and Caltrans to address encampments on State right-of-way, and this program aligns with the ongoing collaboration with the City and Caltrans. In addition to State right-of-way, the encampment is located on City of San Diego property. As the implementing department, the Homelessness Strategies and Solutions Department (HSSD) has already started conversations with the various departments involved. The departments understand the intent of the grant, as HSSD is currently working with them on the Encampment Resolution Funding Program, Round 2 Lookback funds that have been awarded to the City. HSSD is committed to continuing conversations with all parties to ensure awareness, education, and support of the grant opportunity.

## **Centering People**

#### **24. How were persons with lived experience meaningfully incorporated into the planning and proposed implementation of this proposal? Please identify whether any perspectives were incorporated from persons that are currently unsheltered and / or formerly or currently residing within the prioritized encampment. (1000 character limit)**

The City of San Diego has conducted focused outreach events within this encampment area and utilized data and interactions with individuals living there to help develop the proposed program. At the focused outreach events, the City collected data and anecdotes to better understand the population residing in the encampment and their specific needs. Utilizing the data collected, the City was able to develop an intentional program that includes direct resources that incorporate perspectives and address the specific needs of individuals residing within the prioritized encampment. In addition, as part of the application process, the City worked with Lived Experience Advisers to collect input on the proposed program. Lived Experience Advisers also provided a letter of support for this grant.

#### **25. Briefly describe how the proposal exemplifies Housing First approaches as defined in Welfare and Institutions Code section 8255. (1000 character limit)**

Similar to the other homelessness programs administered by the City of San Diego, the proposed program will follow Housing First principles. The City's homelessness programs strive to be low-barrier to provide easier access for individuals experiencing homelessness who are seeking resources. In addition, recognizing the vulnerability of this population, the City is intentional in ensuring its programs are person-centered and trauma informed. The City's goal for the program is to match individuals to long-term housing, and housing placements will be based on each individual's unique circumstance. In addition, the proposal includes supportive services for individuals once they are placed in housing to ensure clients are stable and do not fall back into the cycle of homelessness.

#### **26. Briefly describe how this proposal will center an individual's choice and provide trauma informed services and supports. (1000 character limit)**

The City of San Diego's program will follow a person-centered approach to build building rapport grounded

in trust and consistency to ensure individuals' basic needs are met. Individuals will be respected at every interaction to maintain autonomy and rights. A housing-focused framework will be employed to assess each encampment resident and their needs. Leveraging the City of San Diego's established Street Medicine contract will ensure immediate access to emotional and social support while encouraging health and wellness. Case conferencing will be scheduled regularly, where the first sessions will be to map the location of each encampment for the purposes of organizing appropriate social services, deploying resources, and cross-referencing with Coordinated Entry to ensure enrollments and de-duplication of services. Access to temporary interventions will be offered, but not enforced nor required, at every interaction up to the time permanent housing is secured.

**27. Describe how this proposal will operationalize harm reduction and provide services that improve a person's health, dignity, and safety while they continue to reside within the prioritized encampment site. (1000 character limit)**

The City of San Diego will leverage resources through its existing Street Medicine Program to operationalize harm reduction and provide services that improve a person's health, dignity, and safety. The Street Medicine Program will provide mobile medical care by prioritizing the primary goals of CalAIM to manage risk and need for individuals residing in the encampment through Whole Person Care approaches and offering a full scope of primary care medical services, addiction treatment, psychiatric care, and case management. Moreover, the program may also provide delivery of medications, referrals and transportation to medical specialist appointments, and laboratory testing for clients living in the encampment area. Additionally, the Street Medicine team includes housing transitions/navigation through Enhanced Care Management enrollments for those individuals whose assessments meet the eligibility criteria.

**28. For encamped locations that are objectively dangerous, describe how the proposal will seek to prevent harm for people experiencing unsheltered homelessness in these locations. (1000 character limit)**

Through this grant opportunity, the City of San Diego seeks to provide individuals living in encampments with shelter, and ultimately, placement into long-term housing. The safety and protection of individuals living in encampments is of utmost importance, especially those residing in areas that are objectively dangerous. The City will work coordinate efforts with outreach workers, the Street Medicine Program, and other partners, as needed, to ensure the individuals living in these areas have access to resources and basic needs for their own health and safety. The City's mission is to work with the individuals consistently to quickly and efficiently place them into temporary shelters and/or long-term housing so they no longer are residing in dangerous conditions.

**29. Identify what controls are or will be in place to ensure that all ERF-2-R funded parties will not penalize homelessness. The term "penalize homelessness" means to impose, by a governmental unit, criminal or civil penalties on persons who are homeless in a manner that is related to those persons' engagement in necessary human activities, including sleeping, resting, and eating. (1000 character limit)**

The City of San Diego is committed to providing services that follow a person-centered and compassionate approach. The health and safety of individuals experiencing homelessness as well as the community at large is of utmost importance to the City. The City of San Diego Police Department's Neighborhood Policing Division's (NPD) mission is to enhance the quality of life and safety in San Diego neighborhoods in a manner that is compassionate, professional, and fair to all. NPD follows a model in which officers are trained to always offer services to individuals with whom they encounter prior to taking enforcement action and continue to provide offers for shelter and services at each interaction. The model provides a consistent approach that is compassionate yet upholds accountability for individuals to comply with laws related to public health and safety.

**30. Describe how this proposal considers sanitation services for people residing in the prioritized encampment. This may include but is not limited to non-intrusive, curbside waste removal and**



**access to clean and available bathrooms. (1000 character limit)**

The City of San Diego recognizes that health and safety for those residing in the encampment and the greater community are of most importance. The City has started conversations with the different departments involved to discuss waste disposal and sanitization through the implementation of ERF-2-L. The Homelessness Strategies and Solutions Department will work in close coordination with the Environmental Services Department to coordinate sanitization efforts that limit intrusion while still ensuring the health and safety of the individuals living in the encampment.

## Accelerated Timeline

**31. How is your community currently supporting and / or engaging with people residing within the prioritized encampment? (1000 character limit)**

The City of San Diego is already providing consistent engagement and support for individuals residing within the prioritized encampment through the City’s Coordinated Street Outreach Program. The program currently includes 2.5 full-time Street-Based Outreach Case Managers dedicated to neighborhoods including and surrounding this string of encampments. The Street-Based Outreach Case Managers are currently working with a caseload of approximately 18-20 individuals and managing a By-Name-List.

**32. If this proposal is selected, in advance of receiving funding, what steps will your community take to support the people living in the encampment and swift implementation of this proposal? (1000 character limit)**

The City of San Diego is already engaging with individuals residing in this encampment through the City’s Coordinated Street Outreach Program. If awarded, the City is ready to expeditiously implement the grant activities and execute the program through the already developed By-Name-List. In addition, the City’s Homelessness Strategies and Solutions Department has already begun conversations with the parties involved, including the different City departments and Council Offices. Given the work that is already being done in this community, the City stands ready to administer the grant, further enhance the resources available in this area, and make progress toward connecting individuals to long-term housing.

## Table 6: Projected Milestones

Outreach to the people residing in the prioritized encampment site began / will begin in month ____.	This proposal will reach full operating capacity in month ____.	The first planned exit of a person or household from the prioritized encampment will occur in month ____.	The last planned exit of a person or household from the prioritized encampment will occur in month ____.
November 2023	April 2024	December 2023	May 2024

**Attachment: Standardized Timeline**

ERF Project Timeline\_City of San Diego\_04.23.xlsx

Applicants must use the [ERF-2-R Timeline Template](#) available on box.com

# **CERTIFICATION**

Before certifying, applicants are strongly encouraged to review the NOFA.

*I certify that all information included in this Application is true and accurate to the best of my knowledge.*

**Name**

Kimberlee Zolghadri

**Title**

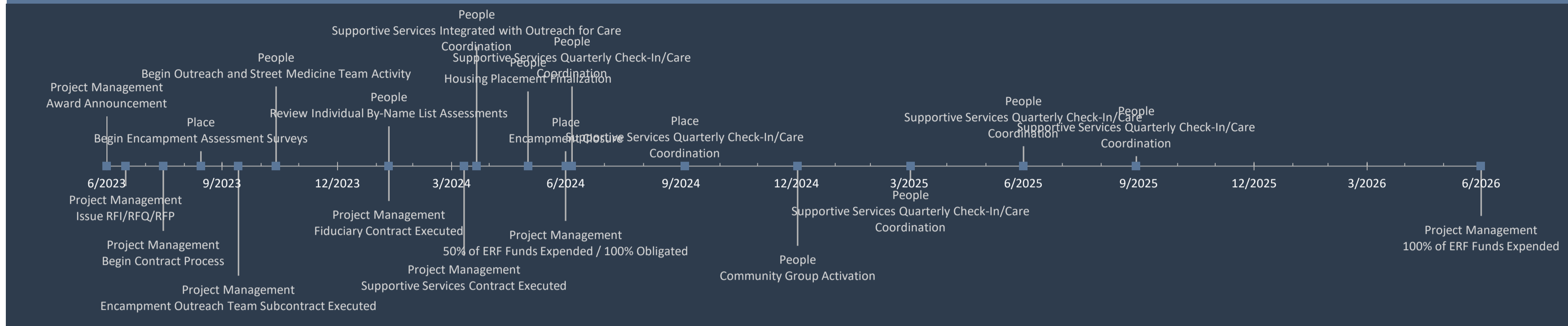
Program Coordinator

**Email**

kzolghadri@sandiego.gov

# ERF-2-R Project Timeline

# JURISDICTION



## Project Milestones

Date	Milestone	Category	Vertical Position	Additional Detail for Milestone
6/30/2023	Award Announcement	Project Management	50	This timeline is based on the assumption the award announcement will take place in July.
7/15/2023	Issue RFI/RFQ/RFP	Project Management	-20	Based on scopes of service, identify qualified providers. Outreach, Fiduciary, Supportive Services.
8/14/2023	Begin Contract Process	Project Management	-65	Contract process includes negotiations, finalizing agreements and seeking City Council approval, as needed.
9/13/2023	Begin Encampment Assessment Surveys	Place	15	City of San Diego Coordinated Street Outreach Program's Street Based Case Managers assigned to the area will begin the surveys.
10/13/2023	Encampment Outreach Team Subcontract Executed	Project Management	-110	
11/12/2023	Begin Outreach and Street Medicine Team Activity	People	80	
2/10/2024	Review Individual By-Name List Assessments	People	40	Establish individual housing plans and potential interim options.
2/10/2024	Fiduciary Contract Executed	Project Management	-35	Agreement executed for Housing Specialist and to process future shallow subsidy payments.
4/10/2024	Supportive Services Contract Executed	Project Management	-90	
4/20/2024	Supportive Services Integrated with Outreach for Care Coordination	People	120	
5/31/2024	Housing Placement Finalization	People	75	
6/30/2024	Encampment Closure	Place	15	Communicate with community and other identified groups to initiate the next steps in returning area to intended use.
6/30/2024	50% of ERF Funds Expended / 100% Obligated	Project Management	-55	Statutory Deadline for 50% of ERF funds to be spent and 100% Obligated
7/5/2024	Supportive Services Quarterly Check-In/Care Coordination	People	80	
10/3/2024	Supportive Services Quarterly Check-In/Care Coordination	Place	0	
1/1/2025	Community Group Activation	People	-80	
4/1/2025	Supportive Services Quarterly Check-In/Care Coordination	People	-15	
6/30/2025	Supportive Services Quarterly Check-In/Care Coordination	People	20	
9/28/2025	Supportive Services Quarterly Check-In/Care Coordination	People	10	
6/30/2026	100% of ERF Funds Expended	Project Management	-50	Statutory Deadline for 100% of ERF funds to be spent

### PROJECT TIMELINE TIPS

1. Fill in the light blue cells to customize this template with your project's specific milestones.
2. Insert entire rows to the Project Milestones table to add additional milestones.
3. Column B should be a date
3. Column C should be the milestone name- however your team refers to it.
4. Column D provides a dropdown menu with options to help categorize milestones into broad groups. To add an option, go to sheet 1 and add the option in one of the green calls at the bottom of the list.
5. Column E Indicates the *Vertical Position* of milestone markers in the Project Milestones table at the top of the sheet. Changing this number allows you to change the vertical position of the milestone relative to the horizontal axis. Use positive numbers to position them above the axis and negative numbers to position them below.
6. Column F is a space to provide additional context, detail, or description for a specific milestone.

	ELIGIBLE USE CATEGORY	<5 WORD DESCRIPTION	NAME OF ENTITY OR PART OF PROPOSAL	ERF-2-R PROPOSED BUDGET	LEVERAGED FISCAL SUPPORT	2 SENTENCE DESCRIPTION
Guidance and Intended Use	Use dropdowns. See NOFA, III. A.	Enables Cal ICH to immediately understand the line item.	Enables Cal ICH to associate the line item with specific entities or parts of a proposal.	Only ERF-2-R Funds	Non ERF-2-R Funds That WILL be Used to Support this Proposal	Enables Cal ICH to better understand the line item, context, and / or other pertinent information related to the proposed line item.

**PERSONNEL COSTS**

				SALARY	FTE	MONTHS			
City of San Diego - Program Manager	Street Outreach	Supervision of contracted outreach staff	City of San Diego	175,500	0.10	24	35,100.00	35,100.00	130000+30% in fringe annually .1 FTE by grant .1 FTE by leverage
City of San Diego - Program Coordinator	Street Outreach	Oversight of By Name list	City of San Diego	156,000	0.10	24	31,200.00	31,200.00	120000 plus 30% fringe annually; .2FTE to program, .2 FTE leveraged
City of San Diego - Program Coordinator	Street Outreach	Supervision of Facilities	City of San Diego	156,000	0.10	24	-	\$ 15,600.00	120000 plus 30% fringe annually .1 leveraged
City of San Diego - Program Coordinator	Administration	Administration of Grant	City of San Diego	175,500	0.10	24	35,100.00		130000 plus 30% fringe annually.
<b>Subtotal - Personnel Costs</b>							<b>\$ 101,400.00</b>	<b>\$ 81,900.00</b>	

**NON-PERSONNEL COSTS**

				UNIT	RATE	TIME			
Contracted Services - Outreach	Street Outreach	Outreach Services	TBD based on City of San Diego selection process for service	1	950,000	12 months	950,000.00	260,000	5 FTE plus transportation and supplies and flexible funding. Leverage of \$260 includes medical mobile outreach and community care events for 52 persons at an average of 1,100 for 18 months on average, which also
Contracted Services - Shallow Rental Subsidy	Rapid Rehousing	Tennant Based Housing Assistance	San Diego Housing Commission	52	1100	18 months	1,529,600.00	150,000	incorporates costs of Housing Specialists & fiscal agent plus staff time
Contracted Services - Supportive Services	Rapid Rehousing	Ongoing Supportive Client Services	TBD based on City of San Diego selection process for service	1	650,000	18 months	550,000.00		Service operator for 3 FTE over 18 months of ongoing client supportive services to stabilize within housing including client flexible support.
Leveraged Shelter	Interim Sheltering	Interim Shelter	City of San Diego					126,000.00	Ten individuals entering city-funded shelters over 6 months
<b>Subtotal - Non-Personnel Costs</b>							<b>\$ 3,029,600.00</b>	<b>\$ 536,000.00</b>	

**ADMINISTRATIVE COSTS**

Administrative Management Costs	Administrative Costs	Administrative supplies & support	City of San Diego	1	25,000	24 months	25,000.00		
<b>Subtotal - Administrative Costs</b>							<b>\$ 25,000.00</b>	<b>\$ -</b>	

**TOTAL BUDGET**

							<b>\$ 3,156,000.00</b>	<b>\$ 617,900.00</b>	
--	--	--	--	--	--	--	------------------------	----------------------	--

## California Department of Transportation

April 28, 2023



To: California Business, Consumer Services and Housing Agency

Subject: City of San Diego Encampment Resolution Funding Letter of Support

To Whom it May Concern:

The California Department of Transportation (Caltrans) District 11 is supportive of and committed to the City of San Diego for their proposal of the Encampment Resolution Funding Request (ERF). The City of San Diego has been partnering with Caltrans to provide outreach and connect PEH with resources along routes 005, 008, 015, 052, 054, 094, 163 and 805 for the last 19 months. City of San Diego outreach teams link PEH to general relief, Cal-fresh, emergency shelters and permanent housing. The City of San Diego outreach teams assist nurses to navigate state right of way offering COVID and flu vaccinations. We know they are committed to the region and have shown their willingness in partnering to improve the accessibility of those most in need by providing housing and other resources.

Caltrans supports ERF funding for the City of San Diego for the following reasons:

- City of San Diego has been collaborating with Caltrans to submit a plan and timeline that includes vouchers and permanent housing options to unsheltered individuals on state right with the intention to break the cycle of homelessness.
- The City of San Diego has been committed to Caltrans and has offered services to PEH on state right of way approximately 1000 times since October 2021.
- The funding is needed along the I-15 highway corridor to resolve critical encampment concerns and transition individuals into safe and stable housing.
- Caltrans has been involved in multiple meetings with City of San Diego to answer questions, provide information and collaborate to develop a proposal that results in substantial solutions for people sheltering on the state right of way.
- Caltrans will only act on encampment sites in the proposal in collaboration with and with at least two weeks-notice to the City of San Diego and partnering agencies (unless critical circumstances exist when an encampment poses an imminent threat to life, health, safety, or infrastructure and must be immediately addressed).

Caltrans District 11 is eager to be part of the City San Diego partnership so we can strengthen and expand the resources to connect homeless with new opportunities in the community.

Sincerely,

*J. Shawn Rizzutto*

05/05/2023

J. SHAWN RIZZUTTO  
Maintenance District Division Chief  
Caltrans District 11  
<shawn.j.rizzutto@dot.ca.gov>  
(760) 594-2032



# County of San Diego

**NICK MACCHIONE, FACHE**  
AGENCY DIRECTOR

**HEALTH AND HUMAN SERVICES AGENCY**  
1600 PACIFIC HIGHWAY, ROOM 206, MAIL STOP P-501  
SAN DIEGO, CA 92101-2417  
(619) 515-6555 • FAX (619) 515-6556

**PATTY KAY DANON**  
CHIEF OPERATIONS OFFICER

April 27, 2023

Ms. Sarah Jarman  
Director, Homelessness Strategies & Solutions Department  
City of San Diego  
202 C Street, MS 8A  
San Diego, CA 92101

Dear Ms. Jarman:

On behalf of the County of San Diego (County) Health and Human Services Agency (HHSA), I am pleased to provide this letter of support for the City of San Diego's application for round two of the State of California's Encampment Resolution Funding (ERF) Program grant, administered by the California Interagency Council on Homelessness.

County HHSA, Department of Homeless Solutions and Equitable Communities works to enhance coordination of existing and new County homelessness efforts and fosters collaboration with and among outside partners, including the City of San Diego, to reduce homelessness throughout the county. The County and City of San Diego (City) share a productive collaborative history in preventing and responding to the needs of individuals experiencing homelessness or at risk of experiencing homelessness.

The City's ERF Program grant application focuses on providing critical support for individuals residing within encampments located along the I-15 corridor from Adams Avenue to Wightman Street. Approximately 65 individuals experiencing homelessness reside within these encampments. The City's proposed program will provide trauma-informed, person-centered outreach and engagement, direct access to essential resources, case management, and shelter. In addition, a key part of the program includes connecting individuals to long-term, stable housing. The proposed program will also increase the resources available for individuals residing within these encampments and will ensure the health and safety of not only individuals experiencing homelessness, but also the surrounding community.

These efforts align with the County's Framework for Ending Homelessness and vision of a just, sustainable, and resilient future for all, specifically those communities and populations in San Diego County that have been historically left behind, as well as our ongoing commitment to the regional *Live Well San Diego* vision of healthy, safe, and thriving communities. To that end, we support the efforts of the City in helping to reduce homelessness.

For any questions, please contact Barbara Jiménez, Community Operations Officer, Department of Homeless Solutions and Equitable Communities by phone at (619) 338-2722 or email [Barbara.Jimenez@sdcounty.ca.gov](mailto:Barbara.Jimenez@sdcounty.ca.gov).

Sincerely,

NICK MACCHIONE, FACHE  
Agency Director

c: Eric K. Dargan, Chief Operating Officer, City of San Diego

April 27, 2023

Ms. Sarah Jarman  
Director, Homelessness Strategies & Solutions Department  
City of San Diego  
202 C Street, MS 8A  
San Diego, CA 92101

Re: Support for Encampment Resolution Funding Program, Round 2 (ERF-2-R)

Dear Ms. Jarman:

On behalf of Lived Experience Advisers a group of 15 homeless and formerly homeless advocates, we are pleased to support the City of San Diego's application for Round 2 of the State of California's Encampment Resolution Funding Program. The city has engaged Lived Experience Advisers in developing this proposal and has included our input.

This funding will provide critical support for encampments located along the I-15 corridor from Adams Avenue to Thorn St. Currently, approximately 65 individuals experiencing homelessness reside within this string of encampments. The City of San Diego's proposed program will provide trauma-informed, person-centered outreach and engagement, direct access to essential resources, case management, and shelter. In addition, the key part of the City of San Diego's proposed program includes support to connect each individual to long-term, stable housing.

The City of San Diego's proposed program will drastically increase the resources available for individuals residing within this string of encampments. In addition, the program will ensure the health and safety of not only individuals experiencing homelessness but also the surrounding community as a whole. We strongly support the City's application for Round 2 of the Encampment Resolution Funding Program and look forward to continuing to collaborate with each other to provide resources and services for our most vulnerable population.

Sincerely,



John Brady  
Executive Director, Lived Experience Advisers - A Project of Catalyst San Diego  
[www.LivedAdvisers.org](http://www.LivedAdvisers.org)  
C: 310-461-7000

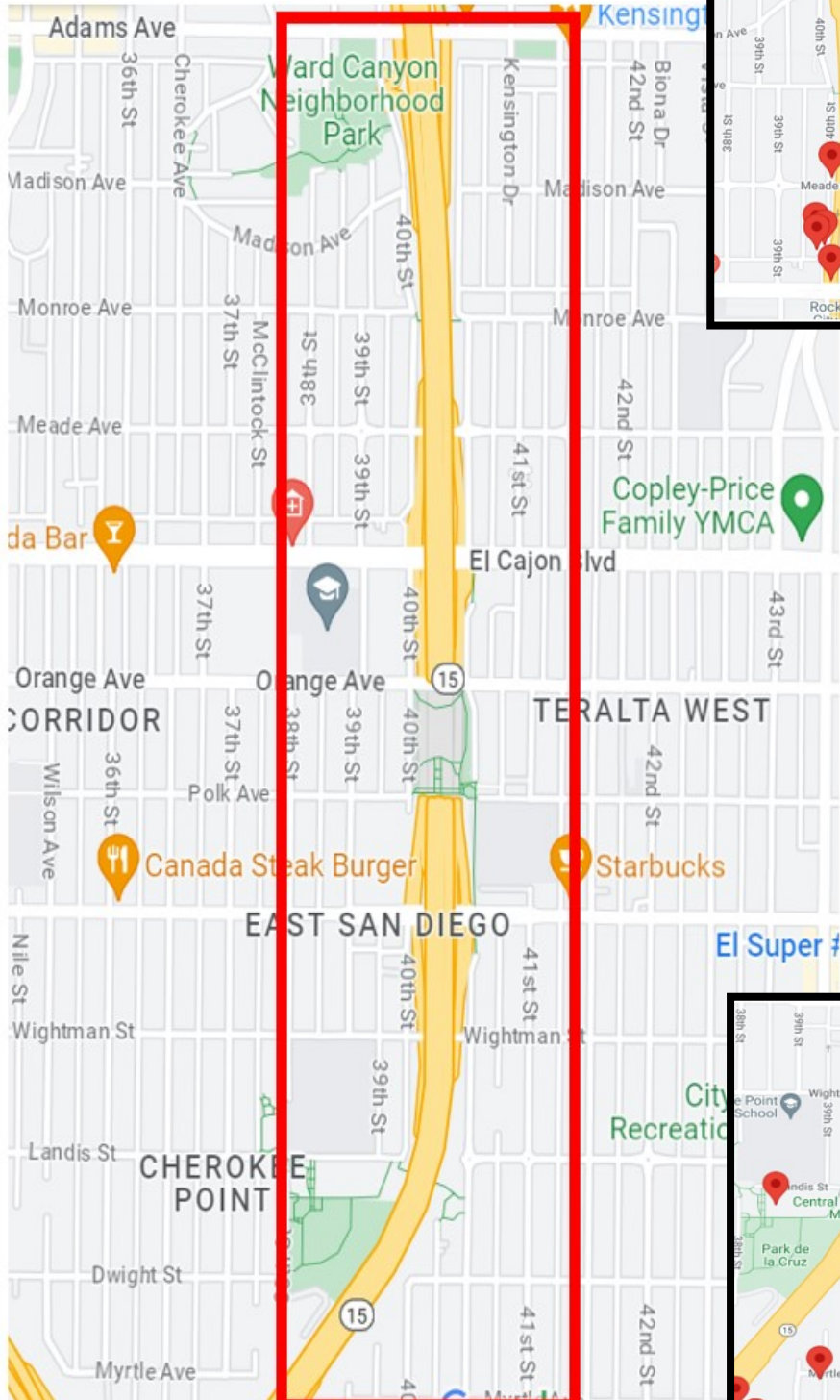


[Book time to meet with me](#)

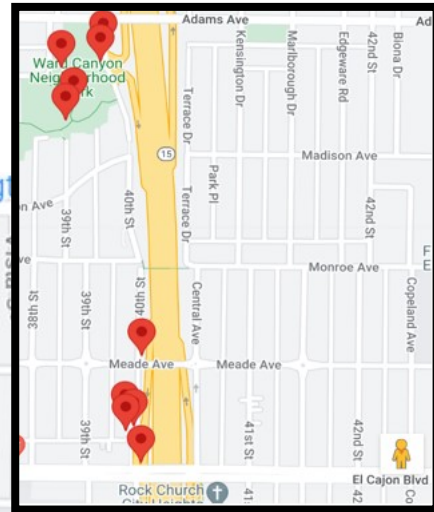
**CITY OF SAN DIEGO / CALTRANS**

**"CORRIDOR" ENCAMPMENT**

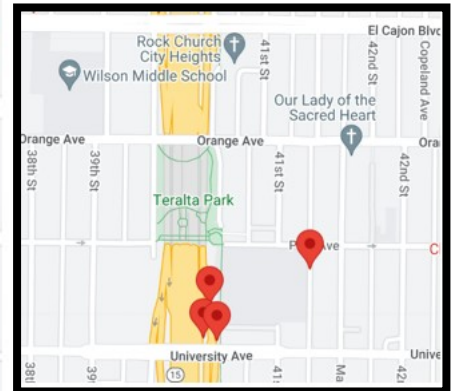
**FOCUS AREA**



**NORTH AREA**



**CENTRAL AREA**



**SOUTH AREA**

