

SUBMISSION PORTAL OVERVIEW

Is the Application a "Test" Submission?

No, this is my official Submission.

Part 1: ADMINISTRATIVE INFORMATION

Application Window

This application is being submitted in the following application window:
Window #3, 5/1/2023 - 6/30/2023

Eligible Applicant

Select the eligible applicant's jurisdiction type.
County

What is the name of the city or county?
Tuolumne

Implementing Organization

Implementing Organization
County Administrator's Office

Specific Unit or Office Within the Implementing Organization
Tuolumne County Homeless Services

Implementing Organization's Address
2 S. Green Street

City Sonora	Zip Code 95370	County Tuolumne
-----------------------	--------------------------	---------------------------

Implementing Organization's Tax ID
Number
946000547

Project Director

Name
Michael Roberson

Title
Homeless Services Coordinator

Phone (209) 533-5533	Email mroberson@co.tuolumne.ca.us
--------------------------------	---

Grant Administrator

Name
Michael Roberson

Title
Homeless Services Coordinator

Phone	Email
--------------	--------------

(209) 533-5533

mroberson@co.tuolumne.ca.us

Contact Person for Application

Name

Michael Roberson

Title

Homeless Services Coordinator

Phone

(209) 533-5533

Email

mroberson@co.tuolumne.ca.us

Authorized Representative

Name

Tracie Riggs

Title

Tuolumne County Administrator

⚠️ This Application uses character limits ⚠️

Reaching these limits is not required. Competitive responses may fall well short of these limits.

Part 2: PROPOSAL OVERVIEW

People Served

Number of people currently residing in prioritized encampment site

34

Of people currently residing in prioritized encampment site, how many will be served by this proposal?

34

Given the potential for inflow of people into the prioritized encampment site, how many people are projected to be served across the entire grant period?

50

Of people projected to be served across the entire grant period, number of people projected to transition into interim shelters

30

Of people projected to be served across the entire grant period, number of people projected to transition into permanent housing

30

Is the prioritized encampment site part of a larger encampment area?

Yes

Approximately how many people are residing in the entire larger encampment area, including the prioritized site?

100

Briefly describe the prioritized site in relation to the larger encampment area. (1000 character limit)

The Caltrans resolved sites are described in the uploaded After Action Reports. Some of these sites have been repopulated and several other sites have been established (see more information below). Sonora Library/Sonora Elementary/Department of Motor Vehicles 480 Greenley Road/Child Road, Sonora, Tuolumne County: Since the closure of the various encampments in Tuolumne County a new

encampment formed in a very sensitive location in Tuolumne County. About 12 homeless living in cars have parked in the Sonora Public Library parking lot. About 10 others have moved to the forested area behind the library which is also adjacent to Sonora Elementary and the Department of Motor Vehicles. Encampment activities in these areas are a threat to public health and safety, have become a public nuisance because of litter and large debris piles, and lack of proper sanitation. Homeless have been “day-camping” in the library. Onsite camping impedes use of the library and adjacent Senior Center.

Encampment Information

1. Briefly describe the characteristics of the people residing within the prioritized encampment site. The description must include demographics and may include household compositions, disabilities, and projected service and housing needs. (1500 character limit)

According to information from Tuolumne County Health & Human Services Agency (HHSA) as well as outreach workers from community-based service providers, 34 individuals have been affected by Caltrans' encampment resolution efforts in Tuolumne County in 2022. These resolution efforts include SR108/Wigwam Road, SR-49 Woods Creek, SR- 49/Stockton Road, SR-108 Woods Creek and SR-108 Lowes. These individuals have scattered to other sites across the County that includes Caltrans property in the Phoenix Lake Road/Bergel Road area and repopulation of the previously resolved Caltrans sites. These sites are near town-center and are close to many services, so the probability of repopulation as a cycle, is high. These sites have an adverse effect on the environment and negatively impact local waterways, wildlife, and community health and safety. Of the 34 displaced ,11 are seniors, 4 on probation, 3 on parole, 1 is a mother of a child under 18, 1 a veteran, 1 a retired nurse, 1 is 85 years old and 24 are ages 18-65 reflecting diversity backgrounds, ethnicities and abilities. The Caltrans After-Action Reports on Caltrans encampments resolution efforts in Tuolumne County during 2022 state that 25 homeless were affected. It is supposed that the discrepancy in numbers between County & Caltrans is primarily due to the transient nature of the homeless population. “Word-on-the-street” prior to resolution efforts resulted in camper migration and the establishment of new scattered sites.

2. Briefly describe physical characteristics of the prioritized encampment site in which the people you are proposing to serve are residing. The description must include the specific location, physical size of the area, the types of structures people are residing in at the site, whether vehicles are present, and any other relevant or notable physical characteristics of the site. (1000 character limit)

Many of the encampments that were closed by Caltrans have been repopulated onsite or on adjacent property. Encampment locations and descriptions are on the attached Caltrans After-Reports. The new encampments are described below with more information on the attached PDF's: Woods Creek behind Motherlode Motors located at 13411 Mono Way with 15-20 campers living in tents, vehicles and constructed habitations. Sonora Library/Sonora Elementary/Department of Motor Vehicles 480 Greenley Road/Child Road with 12 homeless living in cars and about 10 others have moved in the forested area behind the library which is also adjacent to Sonora Elementary and the DMV. Phoenix Lake Road/Bergel Road corridor on both Caltrans and County property which is further west on Woods Creek than the past Caltrans work with 10 campers in tents and cars. Encampment activities in these areas are a threat to public health and safety, increase fire risk, create a public nuisance with litter & large debris piles.

3. Why is this particular encampment site being prioritized? (1000 character limit)

In coordination with Caltrans's abatement efforts in the summer of 2022, the City of Sonora enacted ordinances that effectively moved campers from City parks and other City-controlled public spaces to places out of town-center where new encampments were established. Without increased housing capacity this will be the pattern of all encampment closure initiatives. These particular encampments and those in approximate areas are very visible, a threat to the safety of nearby housing subdivisions because of risk of catastrophic fires being ignited by campers, and detrimental to the health of campers and Tuolumne County citizens because of the lack of proper sanitation and waste management. It is a widespread criticism by community-based service providers and members of the community at large that Caltrans

resolution efforts in Tuolumne County effectively shifted the problem to local jurisdictions without offering support for long-term solutions.

Attachment: Map

Wigwam Report With Maps.pdf

W Stockton Road Report With Map.pdf

Sullivan Creek With Maps.pdf

49 Mil Villa Report With Map.pdf

108 49 Report With Map.pdf

Sullivan Creek.pdf

Bergel Road.pdf

Sonora Library & Child Road .pdf

4. Is the prioritized site on a state right-of-way?

Yes - partially

Attachment: Caltrans Letter of Support

Caltrans Letter of Support Tuolumne ERF.pdf

Proposal's Outcomes

5. What are the outcomes this proposal seeks to accomplish by the grant close (6/30/2026)? If funded, what are the primary activities you are planning to implement to achieve the proposal's outcomes? (1000 character limit)

ERF monies, if awarded, would be combined with other funding sources to support the following outcomes: rapid-rehousing and prevention money in partnership with Amador Tuolumne Community Action Agency; safe-parking site in partnership with Compassion Outreach; case management and housing navigation services through Tuolumne County Health & Human Services Agency; increase in transitional housing through the acquisition of 3 three-bedroom homes to be used in house-share agreements; the purchase and conversion of a local hotel to provide permanent housing for up to 30 people supported by Tuolumne County Homeless Services; and pet services. The required HHAP-3 Local Homelessness Action Plan articulates the goal of reducing the number of persons experiencing homelessness on a daily basis by 69 from a baseline of 687 as well as increasing the number of people exiting homelessness into permanent housing by 36 from a baseline of 358, both before 6/30/24. ERF would support these outcomes.

6. How will the applicant measure progress towards the proposal's outcomes? (1000 character limit)

Progress will be measured through HMIS data, the number of people engaging in person-centered planning and housing services, the number of participants in the safe parking site, an increase in emergency interim, transitional and permanent housing capacity and participation, and a decrease of those who return to homelessness during the period of this grant cycle.

7. Are there any local ordinances, resources, or other factors that may hinder achieving the proposal's outcomes? If so, how will the applicant navigate these challenges? (1000 character limit)

There are no known obstacles. Community Development Department, Capital Projects, County Counsel, HHS and Homeless Services are working collaboratively to assure compliance with codes, ordinances, laws and allowable uses of funding including the newer state-wide emergency housing ordinance appendices. Collaboration with Amador Tuolumne Community Action Agency (ATCAA) for housing and housing management programs is a consistent part of mutual efforts to address/reduce homelessness as

well as manage shared housing programs. Housing First principles are a priority with all housing programs. Behavioral Health operates two supportive housing projects for clients on their caseload with successful outcomes. County staff participates with law enforcement in an outreach initiative called HOST (Homeless Outreach Support Team) that seeks to connect homeless to housing navigation services. The County is committed to housing and not displacement as evidenced by Board actions and priorities.

8. Is this proposal a standalone project or part of a larger initiative?

Larger initiative

8. a) How would this larger initiative be categorized?

Part of a larger initiative

Please describe. (1000 character limit)

The Tuolumne County Homeless Services system of care was recently developed with the assistance of Change Well in collaboration with HHSA staff to create a flow of services that moves the unhoused to permanent housing with person-centered supportive services. It is consistent with the HHAP-3 Local Area Plan to Combat Homelessness, the Central Sierra Continuum of Care LHAP, the Tuolumne County Plan to Combat Homelessness and the local Housing Element. All of these have been developed with input from those with lived experience.

Part 3: IMPLEMENTATION

Core Service Delivery and Housing Strategies

9. Describe the proposed outreach and engagement strategy, case management, and / or service coordination for people while they are continuing to reside within the encampment site. Quantify units of service to be delivered including the ratio of staff to people served, frequency of engagement, and length of service periods. (2000 character limit)

HHSA partners with community-based service providers (law enforcement, schools, hospitals, non-profit organizations) in the development of outreach and case management strategies that align with the needs of the residents and include person-centered, trauma-informed wrap around services. This approach is multi-disciplinary. Referrals come to HHSA through these partners and are assessed for benefits eligibility and resources. Outreach to homeless individuals and encampments takes place one day a week by County Social Workers and community partners. Case workers seek to build trusting relationships with those in the encampments and aid in the development of a person-centered care plan as well as efforts to achieve the care plan goals. These supports include acquiring necessary identification, social security cards, submitting application for various services, health and medical supports, life skills and job training, behavioral health and addiction disorder referrals as well as making connection with family and friends. Housing options through the County and its partnerships are explored and offered when relevant. Service ratios vary based on service needs and partnership collaborations. Currently, the social worker caseload is limited to 20 clients, other supports are offered through community-based organizations and service providers. Case workers attempt to have a minimum of two touch points per week with each client and intend to support clients as long as clients are engaged on a pathway to permanent housing, past the close of the ERF grant cycle if needed. County staff are consummate professionals and employ best practices. Recent trainings include Working with Complex Trauma, Trauma Informed Care, Core Competency of Trauma, Trauma Defined Training, Criminal Justice Trauma, Integrated Core Practice Model, De-escalation, Trust Based Relational Intervention, Motivational Interviewing, Human Trafficking, and Sexual Exploitation Identification.

10. Describe the role of Coordinated Entry in the context of this proposal and how Coordinated Entry policies or processes will support and / or hinder the implementation of this proposal. (1000 character limit)

In collaboration with the Central Sierra Continuum of Care and their contracted administrative entity, Amador Tuolumne Community Action Agency, Tuolumne County utilizes our area Coordinated Entry System to support efforts to provide services for families and individuals who are homeless or at risk of homelessness. The four core components (access, assessment, prioritization, and referral) are implemented as a part of entry into the Homeless Services System of Care and flow of services. This process will help to identify those in our community who have the most vulnerabilities and needs and better inform the process of presenting housing options to the consumer.

11. Please describe the interim shelter and permanent housing opportunities proposed to support this proposal and provide evidence of the applicant's demonstrated ability and commitment to deliver permanent housing for people residing in the prioritized encampment. (2000 character limit)

In 2022, Social Services successfully placed 100 individuals into permanent housing. Funding from this grant would help to provide the following: 1. Tuolumne County partners with Amador Tuolumne Community Action Agency for homelessness prevention, rapid rehousing, utility supplements, emergency housing and housing navigation. Their services during encampment resolution is integral to providing immediate housing for those being displaced. Recently, ATCAA lost significant funding because of changes in the Emergency Services Grant. Tuolumne County is seeking funding as a part of this grant request to restore their operating capital and ensure their vital role in housing placement for on-going and future encampment resolution efforts. ATCAA has been a longstanding housing resource in our region operating several emergency shelters and permanent housing programs. Tuolumne County has several contracts with

ATCAA for various housing services 2. Tuolumne County recently purchased a former memory care facility with 25 double rooms several common areas, and two commercial kitchens for use as emergency interim housing—a very important first step in the development of a system of care and a provision for emergency interim housing. What lacks in the system for those displaced by encampment resolutions is transitional and permanent housing. 3. Distributive housing for shared housing is an initiative that Tuolumne County already employs for Behavioral Health clients and has done so successfully for 13 years. Tuolumne County seeks to acquire 10 homes in the next 2 years to be used for transitional housing. The acquisition of 3 homes is a part of this grant request. These homes could potentially house up to a total of 24 individuals and significantly increase service-based housing capacity. 4. Tuolumne County is in negotiations for the purchase of a small 15 room hotel that will be converted to apartments. All of these programs will provide safe, secure and dignified housing.

12. Describe how this proposal is tailored to meet the needs and preferences of people residing within the prioritized encampment. (1500 character limit)

Definitive data is hard to collect. Our most recent Point in Time count identified 266 homeless including 98 chronically homeless individuals. Cal SAWS data identifies 741 in Tuolumne County who indicate they are homeless including 71 transitional age youth, seniors, veterans, families, parolees and people on probation. Seeking the input from this community is challenging and requires a multi-facet approach. Through one-on-one meetings, participation in advisory committees, participation in public meetings, engagement with service providers and County staff, those with lived experience (from both the community at large and those displaced by resolution activity) have contributed to the formation of the homeless housing strategies that are being implemented in Tuolumne County.

Table 1: Projected Living Situations Immediately Following the Encampment

Briefly Describe Each Projected Living Situation Immediately Following the Encampment	Is This Permanent Housing?	Quantify The Capacity (e.g., number of beds/units, frequency of bed/unit availability)	Prioritized or Set-Aside for ERF-2-R?	Is this living situation funded by ERF-2-R and / or Leveraged Funds?	% of Served Persons Projected to Fall Within This Living Situation
Hotel Vouchers	No	40 rooms for up to 60 Days	Prioritized	ERF	75
Housing Vouchers/Rent Subsidy	Yes	20 units for up to 6 months	Prioritized	ERF	50
Navigation Center Emergency Housing	No	48 beds for up to 6 months	Prioritized	Both	50
Transitional Distributive Housing	No	24 beds for up to 18 months	Prioritized	Both	50
Permanent Housing	Yes	30 beds with no limit of stay	Prioritized	Both	25

Safe Parking	No	20 parking spots for nighttime use with no limit of stay	Prioritized	ERF	25
--------------	----	--	-------------	-----	----

Table 2: Projected Housing and Service Pathways to Permanent Housing

Describe Projected Housing and Service Pathway to Permanent Housing	Quantify the Capacity of the Housing and Service Pathway	Is this Housing and Service Pathway Funded by ERF-2-R and / or Leveraged Funds?
Safe Parking with Client-Centered Outreach Engagement Services	20 spots	ERF
Hotel Vouchers with Case Management including but not limited to CA DSS Funding	40 rooms for 60 nights	ERF
Housing Vouchers with Case Management including but not limited to CA DSS Funding	20 units for up to 6 months	Both
Navigation Center Emergency Interim Housing and Onsite Wrap Around Services	48 beds for up to 6 months	Both
Transitional Distributive Housing with Case Management and Supportive Services	24 beds for up to 18 months	Both
Permanent Housing	30 beds	Both
Pet Services & supports	NA	ERF

Table 3: Strategies to Mitigate Displacement

Strategy	Is this Strategy Funded by ERF-2-R and / or Leveraged Funds?
Intensive case-management with priority of client choice related to available services.	Both
Collaboration and coordination of outreach and case-planning before, during and after the cleaning and clearing of encampments	Both
Early outreach and communication of resolution efforts including contact information & timeline of resolution activity	Both
Engagement of community-based service providers in the connection with and	Both

care of those affected by resolution efforts

Provision of pet services	Lev
---------------------------	-----

Provision of transportation	Lev
-----------------------------	-----

Provision of transportation & storage of personal belongings	Both
--	------

Table 4: Strategies to Mitigate Returns to Unsheltered Homelessness

Strategy	Is this Strategy Funded by ERF-2-R and / or Leveraged Funds?
Intensive case-management with priority of client choice related to available services & resources	Both
Provision of housing navigation and landlord engagement/negotiations to avoid evictions	ERF
Support & resource for rental subsidy, utility payments and repairs	ERF
Whole-person care & case management options as a resource to stabilization and housing security	Both

13. Describe how this proposal considers and plans for the dynamic nature of encampments including potential inflow of people into the geographically served areas. (1000 character limit)

This proposal is based on data from County staff and service providers in the community related to the encampment resolution projects by Caltrans. With continued outreach and increased housing capacity, caseworkers will be able to offer both interim emergency shelter as well as transitional and permanent housing options to clients. The collaborative efforts of both County staff and community service providers are effective in building relationship and earning trust with the unhoused in Tuolumne County. A group called “Compassion Outreach”, which is a collaboration of volunteers from Resiliency Village, Nancy’s Hope, the Chicken Ranch Rancheria Me-Wuk Indians of California and the Lambert Drop-in Center, effectively engages unhoused individuals with available services to include food, hygiene, medical & healthcare, and benefits eligibility. Outreach efforts will continue to those who are new to the area or repopulating sites, offering more stable housing options.

14. Describe how this proposal will support individuals with continued access to and / or the storage of their personal property. (1000 character limit)

Tuolumne County Health & Humans Services Agency takes a trauma-informed approach to case management. This includes an understanding of the complexities of attachment to the accumulated personal possessions that many homeless have. As a result, standard practice is to make arrangements for safe storage of personal possessions with ample access to those possessions. Related to the Caltrans work in Tuolumne County in 2022, staff offered storage bins and secure storage of those bins. Trailers and vehicles were also stored as needed. The new Tuolumne County Navigation Center will have secure and protected space for storing personal possessions for program participants. In regard to new housing initiatives, storage and access provisions will be made for every program participant.

15. Describe how this proposal will support individuals with service animals and/or pets. (1000 character limit)

Homeless Services is committed to compliance with all relevant laws regarding service animals and pets.

It is recognized that pets play a significant role in supporting people through trauma, healing and to self-sufficiency. As a part of Navigation services, Tuolumne County is in relationship with several veterinarians as well as Tuolumne County Animal Control. Through these partnerships our Homeless Services efforts will help to provide necessary veterinarian services, vaccinations, licensing and food. The emergency shelter will also have a pet run/area to support health and safety for all program participants. A new partner initiative with a local non-profit called Friends of the Animal Community will include an option to participate in a short term pet fostering program. Funding is needed to support this program.

Budget and Resource Plan

16. State the total amount of ERF-2-R funds requested.

\$6,254,250.00

17. State the estimated dollar value of secured, non-ERF-2-R resources that will help meet this proposal's outcomes.

\$2,434,237.00

18. Identify and describe these non-ERF-2-R resources. (1000 character limit)

GRANT

AMOUNT

CARE ACT Housing Funds

400,000

Opioid Settlement Funds

400,000

HHAP-4 Funds

502,627

Behavioral Health Bridge Housing

550,000

Mental Health Services Act

550,000

TOTAL

\$2,402,627

Other leveraged housing funding will source from program monies made available for services & operations through California DSS.

19. Describe how the proposal is a prudent and effective use of requested funding relative to the number of people it seeks to serve and the types of services and housing to be provided in the proposal. Include an explanation of how the requested ERF-2-R amount was determined. (1000 character limit)

The priority use for homeless housing grant monies for Tuolumne County is the acquisition of emergency, transitional and permanent housing. Owning the properties instead of renting or leasing assures longevity of program services because the housing will not be grant dependent. The County does not pay property tax, is self-insured and is a part of a joint powers authority for reduced electricity costs, and will not have a mortgage assuring long-term sustainability of housing programs. The system of care is designed to be a flow toward permanent housing and self-sufficiency allowing for many more people to be served over time than the total bed capacity of any one night.

These funds are an investment into a future and sustainable system of support and housing provision.

Attachment: Standardized Budget
ERF-2-R, Budget for Tuolumne County 06 2023.xlsx

Key Entities and Staff

20. First, describe the implementing organization and specific unit or office within the implementing organization that would administer ERF-2-R. Then, describe their role and primary responsibilities for this proposal. Finally, if these entities have managed a complex homelessness project or grant, describe how those experiences informed this proposal. (1500 character limit)

Homeless Services purposes to engage the homeless on a path toward permanent housing through extensive partnerships. HHSA is the implementing organization and will administer the ERF-2 funds. Homeless Services and Capital Projects staff are working collaboratively on the acquisition and funding of the Navigation Center, Distributive & Permanent Housing initiatives. A Housing Navigator will be a part of the Homeless Services staff assuring compliance with tenancy laws and best practice requirements for landlord/tenant engagement. HHSA currently owns and operates two supportive housing projects as a part of the Distributive Housing Program and an emergency children’s shelter. Their success in providing housing and supportive services for over 13 years is, in part, what led to the decision to expand the Distributive Housing program model and services. Capital Projects and Health & Human Services Agency have vast experience in seeking and managing grant funds. These funds are drawn down within very complicated allocation processes and reporting requirements. The staff team is prepared and equipped to expand their scope of housing services and build on their past success to provide dignified housing choices for the unhoused of Tuolumne County.

Table 5: Key Staff

Title	Currently Filled Position?	FTE of Staffing for This Proposal	Funded by ERF-2-R and / or Leveraged Funds?	Brief Description of Duties
Director Health and Human Services Agency	Yes	.10	Leveraged	Oversees HHSA
Social Services Director	Yes	.20	Leveraged	Oversees Social Services
Social Services Agency Manager	Yes	.33	Leveraged	Manages Adult Systems of Care
Behavioral Health Worker	Yes	.33	Leveraged	Supports Homeless BH Clients
Homeless Services Coordinator	Yes	1	Leveraged	Coordinates County Homeless Housing
Social Service	Yes	.5	Leveraged	Manages Social Workers

Supervisor

Cleric	Yes	.5	Leveraged	Clerical Support
Social Worker	Yes	1	Leveraged	Direct Support/Case Management
Social Worker	Yes	1	Leveraged	Direct Support/Case Management
Social Worker	No	1	ERF	CES/HMIS
Housing Navigator	No	1	ERF	Housing Services/Landlord Engagement
Behavioral Health Worker	Yes	1	Leveraged	Direct Support/Case Management
Peer Specialist	Yes	1	Leveraged	Direct Support/Lived Experience/Case Management

21. First, describe key partners that will collectively pursue the proposal's outcomes. Then, describe their role and primary responsibilities for this proposal. Finally, if these entities have managed a complex homelessness project or grant, describe how those experiences informed this proposal. (1500 character limit)

Homeless Services and Capital Projects are running point on identifying properties that will support the Distributive Housing program models and their procurement. Capital Projects Department has extensive experience with large scale building projects and the complicated funding streams that support those efforts. Most recently multi-million-dollar developments were completed to include a Law & Justice Center (Courts, Juvenile Detention Center, County Jail, Public Transit) and Community Resilience Centers in Tuolumne & Groveland (related to catastrophic wildfires). HHSA currently owns and operates two supportive housing projects as a part of the Distributive Housing Program as well as an emergency children's shelter. HHSA successfully provided emergency non-congregate housing through Project Roomkey during the COVID-19 Pandemic. Data from HHSA regarding housing initiatives demonstrates their ability to manage complex funding streams while succeeding at various types of housing placements. In 2022, HHSA received 380 referrals for housing services. 161 individuals received temporary housing at motels (up to two weeks). 100 individuals were placed in permanent housing. The Amador Tuolumne Community Action Agency is a valued partner offering homelessness prevention and housing services in collaboration with County staff. The Central Sierra Continuum of Care supports collaboration for reducing homelessness in our local region to include funding and goal setting.

22. Describe specific examples of how Local Jurisdiction(s) and the CoC have collaborated on the design and implementation of this proposal. (1000 character limit)

The Central Sierra Continuum of Care includes four counties located along the foothills of the Sierra Nevada in the Mother Lode Gold Rush Country. The main highway is State Highway 49 which is a scenic route that connects all of these historic communities to each other and to both the Stanislaus National Forrest and Yosemite National Park. Representatives of these communities met with Dr. Patricia Davis from the Central Sierra Continuum of Care to discuss the ERF grant and the possibility of a cooperative project. Only a few of the communities had encampments along the state highway corridors that involved Caltrans resolution efforts. It was noted that the communities impacted were distanced from each other by 100 miles and were active in seeking homeless housing solutions in different ways. As a result, it was decided that each affected community would apply for funds individually under advisement of the CSCOC. Tuolumne County has the support of the CSCOC and the City of Sonora.

Optional Upload: Evidence of Cross-Jurisdictional Collaboration

COC Letter of Support Tuolumne ERF.pdf

AH Sonora Letter of Support Tuolumne ERF.pdf

RV Letter of Support Tuolumne ERF.pdf

23. Identify any entities that have a right to and/or control of the property upon which the encampment site resides and discuss whether each of these entities committed allowing the implementation of this proposal. If they have not committed, please explain how you have or plan to engage with this entity to implement your proposal. Additionally, describe how you collaborated with Caltrans on your program design, implementation plans, and timeline. (1000 character limit)

Caltrans staff was exemplary in their coordinated efforts with the encampment resolution in Tuolumne County in the Summer of 2022. With regard to this application, connections with Caltrans Public Information Office, Homeless Encampment Liaison to Local Partners, Statewide Homelessness and Encampment Coordinator, and Caltrans Maintenance Area Superintendent have been supportive of County efforts through the exchange of information and meeting onsite to evaluate encampment repopulation and the establishment of new encampments on adjacent properties. Caltrans District 10 Director, Dennis Agar, and District 10 Deputy Director for Maintenance, Charla Mordell, are aware of Tuolumne County housing efforts and Encampment Enrich Funds application as evidenced by their submitted letter of support. Meetings with all of the encampment resolution efforts from Caltrans were regarding State property. Resolution of new encampments are supported by both the City of Sonora and Tuolumne County.

Centering People

24. How were persons with lived experience meaningfully incorporated into the planning and proposed implementation of this proposal? Please identify whether any perspectives were incorporated from persons that are currently unsheltered and / or formerly or currently residing within the prioritized encampment. (1000 character limit)

Through one-on-one meetings, participation in advisory committees, participation in public meetings, engagement with service providers and County staff, those with lived experience (from both the community at large and those displaced by resolution activity) have contributed to the formation of the homeless housing strategies that are being implemented in Tuolumne County. All of the housing initiatives being developed have been informed and influenced by those with lived experience. One recent example of the influence of the “voice” of the unhoused in our community is that the safe parking program was not originally an established priority but now is under development and a part of this request. Those who left the encampment areas in their cars moved to the public library parking lot which feels unsafe for them. The County owns property that can be developed into a safe parking program which will become a street outreach program. Funding is needed to support this initiative.

25. Briefly describe how the proposal exemplifies Housing First approaches as defined in Welfare and Institutions Code section 8255. (1000 character limit)

Low barrier entry points coupled with developing and trusting relationships between outreach workers and the homeless will ensure the best beginning on a path to self-sufficiency. Program participants will be welcomed and supported at a level that is accepted. Services will be offered, resources will be shared and partnerships with community-based service providers will be forged. Should a person choose to not engage in services, they will still be welcomed with efforts, and hope, toward a future engagement in services. HHS recognizes that drug and alcohol use and addiction may be a part of the lives of many. Program participants will be offered services for increased health and wellness without judgment or condemnation. Tuolumne County is and has been committed to low-barrier, Housing First principles.

26. Briefly describe how this proposal will center an individual’s choice and provide trauma informed services and supports. (1000 character limit)

Self-determination is a key element on the path to self-sufficiency. During the Coordinated Entry and

benefits eligibility process, individuals will be made aware of options (with implementation of trauma-informed best practices) for services and will determine which services they want to engage. Staff has training and skill in motivational interviewing practices that build trust and foster “voice & choice” with clients in a way that helps staff to better understand what services clients want and will engage in without re-traumatizing clients through repeated questions and narrative about their story. All services offered are voluntary and not required.

27. Describe how this proposal will operationalize harm reduction and provide services that improve a person’s health, dignity, and safety while they continue to reside within the prioritized encampment site. (1000 character limit)

For those who remain in encampments and those who are housed and connected to services, a trauma-informed approach is best practice and one that is implemented by County staff and service providers. Nonjudgmental communication on harm reduction and how to avoid other risky behaviors by engaging in safer practices will be offered. This includes education on drug and alcohol use. Voluntary service referrals will be offered for any resident who requests these services, or who may benefit from these services based on information shared during outreach and case management.

28. For encamped locations that are objectively dangerous, describe how the proposal will seek to prevent harm for people experiencing unsheltered homelessness in these locations. (1000 character limit)

There are elevated risks and for those living in encampments and the community at large. These risks include impacts on physical and mental health, poor nutrition and medical care, lack of sanitation and potable water and poor sleeping conditions. There are environmental impacts on waterways because of human waste and garbage, and increased risk of wildfires. Extreme weather conditions with heat, rain and snow also jeopardize the health and safety of those in the encampments. Efforts to reduce these risks include increased outreach, education, and support services with priority placed on engagement in housing services.

29. Identify what controls are or will be in place to ensure that all ERF-2-R funded parties will not penalize homelessness. The term “penalize homelessness” means to impose, by a governmental unit, criminal or civil penalties on persons who are homeless in a manner that is related to those persons’ engagement in necessary human activities, including sleeping, resting, and eating. (1000 character limit)

Tuolumne County Counsel is well-versed in precedent setting caselaw that does not allow the County to criminalize homelessness. The County has made no effort to make it “illegal” to be homeless. Demonstrative effort on the part of the Board of Supervisors, the County Administrator, and the Sheriff’s Department has been exerted to connect the homeless people in the community to services and housing and not to penalize those who chose not to connect. The Board of Supervisors has declared a local housing emergency and enacted new housing ordinances to equip staff to better meet the needs of the unhoused. If more housing were available, we would be more successful in supporting people to healthier and vitalized living. These grant funds, if awarded, will help to implement a strategy to reduce homelessness in Tuolumne County by providing emergency, transitional and permanent housing for those who have been abated from State property.

30. Describe how this proposal considers sanitation services for people residing in the prioritized encampment. This may include but is not limited to non-intrusive, curbside waste removal and access to clean and available bathrooms. (1000 character limit)

Tuolumne County facilities open for public use for toilets, sinks, showers and potable water. The City of Sonora has public restrooms throughout the city. “Give Someone a Chance” has a portable shower bus and a laundry bus that circulate throughout the community. The County has contracted with the local waste management agency to allow for 1000 tons of trash to be disposed for free. Members of the Homelessness Committee have organized volunteer days with community members going into encampments, to pick up trash. PileataTime has also organized trash pickup days. Compassion

Outreach is encouraging campers to collect garbage and volunteers will pick it up and dispose of it. Education efforts for the public have been implemented to donate directly to service providers who could control waste instead of donating goods directly to homeless individuals. A few service providers have a “bag for bag” exchange program where they give a bag of food in exchange for a bag of garbage,

Accelerated Timeline

31. How is your community currently supporting and / or engaging with people residing within the prioritized encampment? (1000 character limit)

22 partnership agencies provide outreach and services for individuals in the scattered encampments and have been contributors to the development of the Navigation Center & Distributive Housing program model. Each of these partner agencies have comprehensive volunteerism to support their agency’s mission and are committed to successful outcomes of the Navigation Center & Distributive Housing program. Many of these agencies wrote letters of support that can't be included in this application because the upload for proof of collaboration only allows for three submissions. Their letters are compelling and clearly communicate their desire to combine efforts and reduce homelessness in aggressive ways, with compassion for those living unhoused. We need funding.

32. If this proposal is selected, in advance of receiving funding, what steps will your community take to support the people living in the encampment and swift implementation of this proposal? (1000 character limit)

Outreach that exists now will continue as will case management and efforts to provide supportive services and housing. Rural communities continue to be underfunded and overlooked for funding in inequitable ways. While Tuolumne County is one of the largest counties in the state by way of land mass. 77% of the County is public lands (including Yosemite National Park and the Stanislaus National Forrest) that do not create tax-based discretionary income. We need financial support. One large grant combined with other funding streams and community partnerships could help alleviate human suffering and reduce homelessness in Tuolumne County in very significant ways and in a manner that is aligned with our County’s Homeless Services System of Care. We have the vision, the strategy, and the partnerships, but we need the funding.

Table 6: Projected Milestones

Outreach to the people residing in the prioritized encampment site began / will begin in month ____.	This proposal will reach full operating capacity in month ____.	The first planned exit of a person or household from the prioritized encampment will occur in month ____.	The last planned exit of a person or household from the prioritized encampment will occur in month ____.
June 2022	January 2025	November 2023	May 2026

Attachment: Standardized Timeline

ERF-2-R Project Timeline for Tuolumne County 06 2023.xlsx

Applicants must use the [ERF-2-R Timeline Template](#) available on box.com

CERTIFICATION

Before certifying, applicants are strongly encouraged to review the NOFA.

I certify that all information included in this Application is true and accurate to the best of my knowledge.

Name

Michael Roberson

Title

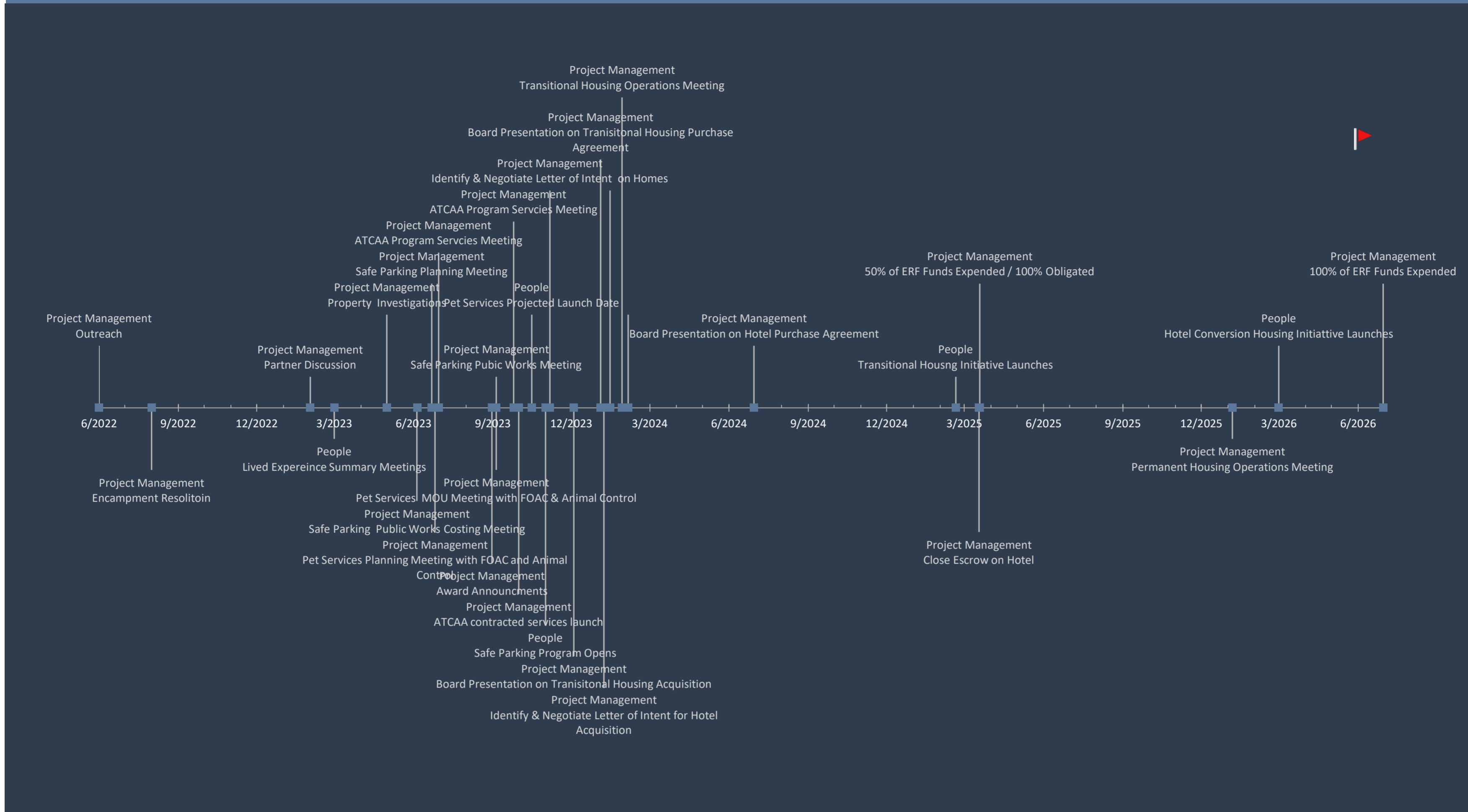
Homeless Services Coordinator

Email

mroberson@co.tuolumne.ca.us

ERF-2-R Project Timeline

Tuolumne County



Project Milestones

Date	Milestone	Category	Vertical Position	Additional Detail for Milestone
6/1/2022	Outreach	Project Management	50	Connect & offer services with affected population, Caltrans, CHP, HHSA & County Counsel, City of Sonora,
8/1/2022	Encampment Resolitoin	Project Management	-50	Encampment resolution work begins
2/1/2023	Partner Discussion	Project Management	25	Meetings with partner agencies to collaborate efforts
3/1/2023	Lived Expeirnce Summary Meetings	People	-25	Multiple meetings to connect, brainstorm, and seek housing & service solutions.
5/1/2023	Property Investigations	Project Management	75	Inspections of viable properties for housing program innitiatives
6/5/2023	Safe Parking Public Works Costing Meeting	Project Management	-75	Discussion on costs for site improvement.
6/22/2023	Safe Parking Planning Meeting	Project Management	100	Discussion on program operations with Social Services.
6/26/2023	Pet Services Planning Meeting with FOAC and Animal Control	Project Management	-100	Discussion on partnership and costs for pet support and fostering services for program participants.
6/30/2023	ATCAA Program Services Meeting	Project Management	125	Discussion on scope of contracted services to include Emergency & RR housing initiatives and contracts.
8/31/2023	Award Announcements	Project Management	-125	Grant Award announcements
9/5/2023	Safe Parking Pubic Works Meeting	Project Management	25	Authorize Work and Confirm Timeline
9/5/2023	Pet Services MOU Meeting with FOAC & Animal Control	Project Management	-50	Meeting to finalize service plans and confirm launch date.
9/25/2023	ATCAA Program Services Meeting	Project Management	150	Review & ratify contracts
10/1/2023	ATCAA contracted services launch	Project Management	-150	Contracted Services launch
10/16/2023	Pet Services Projected Launch Date	People	75	Projected start-up of pet services supports
11/1/2023	Safe Parking Program Opens	People	-175	Safe Parking Program will open in collaboration with Compassion Outreach and TCDSS.
11/6/2023	Identify & Negotiate Letter of Intent on Homes	Project Management	175	Identify & Negotiate Letter of Intent on Homes for Shared Transitional Housing Initiative
12/4/2023	Board Presentation on Transitional Housing Acquisition	Project Management	-200	Request approval to post public notice of Intent to Purchase
1/4/2024	Board Presentation on Transitional Housing Purchase Agreement	Project Management	200	Request approval to enter into purchase agreement & Open Escrow, Conduct due diligence inspections and
1/8/2024	Identify & Negotiate Letter of Intent for Hotel Acquisition	Project Management	-225	Identify & Negotiate Letter of Intent on hotel & conversion to apartments
1/15/2024	Board Presentation on Hotel Acquisition	Project Management	175	Request approval to post public notice of Intent to Purchase
1/29/2024	Transitional Housing Operations Meeting	Project Management	250	Confirm opening date with HHSA staff & Housing Navigation Services
2/5/2024	Close Escrow on Transitional Housing	Project Management	75	Close escrow and authorize project lists work to be completed
2/19/2025	Board Presentation on Hotel Purchase Agreement	Project Management	25	Request approval to enter into purchase agreement & Open Escrow, Conduct due diligence inspections and
3/18/2025	Transitional Housng Initiative Launches	People	-100	Program Participants move in as per HHSA Housing Navigation Process
3/19/2025	Close Escrow on Hotel	Project Management	100	Close escrow and authorize project lists work to be completed
6/30/2024	50% of ERF Funds Expended / 100% Obligated	Project Management	50	Statutory Deadline for 50% of ERF funds to be spent and 100% Obligated
1/6/2026	Permanent Housing Operations Meeting	Project Management	-25	Confirm opening date with HHSA staff & Housing Navigation Services-multiple meetings
3/1/2026	Hotel Conversion Housing Initiative Launches	People	50	Program Participants move in as per HHSA Housing Navigation Process
6/30/2026	100% of ERF Funds Expended	Project Management	100	Statutory Deadline for 100% of ERF funds to be spent

PROJECT TIMELINE TIPS

1. Fill in the light blue cells to customize this template with your project's specific milestones.
2. Insert entire rows to the Project Milestones table to add additional milestones.
3. Column B should be a date
3. Column C should be the milestone name- however your team refers to it.
4. Column D provides a dropdown menu with options to help categorize milestones into broad groups. To add an option, go to sheet 1 and add the option in one of the green calls at the bottom of the list.
5. Column E Indicates the *Vertical Position* of milestone markers in the Project Milestones table at the top of the sheet. Changing this number allows you to change the vertical position of the milestone relative to the horizontal axis. Use positive numbers to position them above the axis and negative numbers to position them below.
6. Column F is a space to provide additional context, detail, or description for a specific milestone.

		ELIGIBLE USE CATEGORY	<5 WORD DESCRIPTION	NAME OF ENTITY OR PART OF PROPOSAL				ERF-2-R PROPOSED BUDGET	IF ANY, LEVERAGED 2 SENTENCE DESCRIPTION FISCAL SUPPORT	
Guidance and Intended Use	<p>This budget template may be slightly modified to meet local needs. If awarded funding, this budget, once submitted, will serve as your community's official project budget. Any changes to this budget must be authorized through the change request process.</p> <p>Principle: Cal ICH should be able to navigate only your submitted budget and understand the general parameters of the proposal and how it may be funded.</p>	Use dropdowns. See NOFA, III. A.	Enables Cal ICH to immediately understand the line item.	Enables Cal ICH to associate the line item with specific entities or parts of a proposal.				Only ERF-2-R Funds	Non ERF-2-R Funds That WILL be Used to Support this Proposal	Enables Cal ICH to better understand the line item, context, and / or other pertinent information related to the proposed line item.
PERSONNEL COSTS					SALARY	FTE	MONTHS			
	Services Coordination	Social Workers for Case Management	HHSA	100,000.00	1.00	36	300,000.00	-		
	Services Coordination	Housing Navigator	HHSA	100,000.00	1.00	36	300,000.00	-		
Subtotal - Personnel Costs						2.00	\$ 600,000.00	\$ -		
NON-PERSONNEL COSTS					UNIT	RATE	TIME			
	Street Outreach	Safe Parking	HHSA	1	125,000	3 Years	125,000.00			
	Systems Support	Pet Services	FOAC	1	30,000	3 Years	30,000.00			
	Systems Support	ATCAA Hotel Vouchers	ATCAA	40	125	60 nights	300,000.00			
	Rapid Rehousing	ATCAA Rental Subsidy	ATCAA	40	750	6 months	180,000.00			
	Interim Sheltering	Residential Homes for Shared Housing	HHSA	3	500,000		1,500,000.00			
	Delivery of Permanent Housing	Hotel Conversion to Apartments	HHSA	1	3,250,000		3,250,000.00	500,000.00	CARE ACT Housing Funds	
								500,000.00	Opioid Settlement Funds	
								334,237.00	HHAP 4 Funds	
								550,000.00	Behavioral Health Bridge Housing	
								550,000.00	Mental Health Services Act	
Subtotal - Non-Personnel Costs							\$ 5,385,000.00	\$ 2,434,237.00		
ADMINISTRATIVE COSTS										
	Administrative Costs	Program Administration 5%					269,250.00	-		
Subtotal - Administrative Costs							\$ 269,250.00	\$ -		
TOTAL BUDGET							\$ 6,254,250.00	\$ 2,434,237.00		

February 23, 2022

To: California Business, Consumer Services, and Housing Agency

Subject: Tuolumne County Homeless Services Encampment Resolution Funding
Letter of Support

To the California Interagency Council on Homelessness,

Caltrans District 10 is committed to supporting the Tuolumne County Homeless Services proposal for Encampment Resolution Funding (ERF). Tuolumne County and partnering agencies provide services including emergency housing, food, clothing, health and medical care, mental health support, social service support, and case management, to persons experiencing homelessness in Tuolumne County. These services have been offered at encampments along the State Route 108 and 49 corridors and extend to new encampments formed following Caltrans encampment resolution efforts in the summer of 2022 in Tuolumne County.

Tuolumne County is committed to the region and is a valued partner to Caltrans District 10. The County has shown its eagerness to improve access for those most in need by providing housing and other critical resources for residents experiencing homelessness.

Caltrans is committed to:

- **Provide recommendation/support for funding**

Caltrans District 10 supports this request to help reduce the devastating impacts of climate change which has exacerbated the risk of wildfires that cause devastation to forests, pollute pristine waterways, impact our air quality, and force the closure of highways as we battle deadly blazes in the Sierra Nevada foothills. Twice in 2022, Caltrans witnessed fires spread from open-flame campfires in encampments to dense forest land within the communities of Tuolumne County.

Tuolumne County is home to Yosemite National Park which brings vital tourism dollars to local businesses and provides unique recreational experiences for visitors year-round. Wildfires are a constant threat. Cooking and warming fires within encampments are of high concern for local officials and community members. Caltrans has worked closely with Tuolumne County and local fire agencies to help mitigate the threat, but

more resources are needed to ensure People Experiencing Homelessness (PEH) are provided with housing solutions and not returning to or establishing new encampments along the state right-of-way.

- **Provide support and evidence of homeless assistance to show the work that has been done by Tuolumne County and its partners**

Caltrans District 10 is currently working with Tuolumne County as it enters a crucial stage of its innovative effort to transition PEH out of encampments and into safe and suitable housing. Providing funding for this program will allow PEH opportunities to transition into a safer environment and eliminate potential health hazards due to exposure to extreme heat, freezing temperatures, heavy rain, and driving snow.

Public Information Officer Rick Estrada is our liaison between Tuolumne County and District 10. By designating a 'point of entry and exit' for information, we increase the program's efficiency for Tuolumne County, District 10, and the County's PEH population. District 10 will work with Tuolumne County to ensure that all regulatory and legal requirements of the program are achieved, while providing updates as work proceeds. We will regularly document work so that we can provide a start-to-finish visual presentation of the fine work our partner performs.

- **Explain why funding is necessary for homeless encampments resolution along state highways in Tuolumne County and surrounding areas to prevent re-population and address new scattered encampments**

Funding is often the missing component for rural counties when addressing needs associated with homeless encampments. Tuolumne County has been an historically underserved community when it comes to state funding, placing a heavy strain on local government resources. In an era of equity and social justice, Tuolumne County is a deserving recipient of a Cal-ICH grant – this is the state's opportunity to better serve an often-overlooked, under-funded rural county.

Tuolumne County has the personnel and knowledge to make significant strides in reducing its homeless population and providing resources to help discourage the return of PEH to encampments. While Tuolumne County's homeless population pales in the face of large urban communities, the impact of homelessness on underserved counties is greater due to the

limited presence of Non-Government Organizations (NGO) and private programs that are more prevalent in urban regions.

- **Your agency's role in support for ERF funds**

Caltrans District 10 has implemented a plan to support this request by designating a Cal-ICH program liaison, Rick Estrada, to meet with our partner, discuss the grant, listen to our partner's plan, and provide administrative assistance with documentation to help secure the grant. As we work with Tuolumne County on this program, the skills of a Public Information Officer in this role will help to promote program goals, increase our outreach methods, and gain positive public support.

By promoting Tuolumne County's successful Cal-ICH grant application, it is anticipated that additional funding could come from private groups, community-based agencies, and regional NGOs who recognize the benefit of contributing to a program that has already been approved and is moving forward on a path to success. Everyone likes to join a winner and Tuolumne County's great application is a winner.

Caltrans District 10 is eager to be a part of the Tuolumne County Homeless Services partnership to better strengthen and expand the resources to connect PEH with housing opportunities in the community.

Sincerely,



Charly Modrell
Deputy District Director, Caltrans District 10
Charla.Hoffman-Modrell@dot.ca.gov
(209) 639-3823



CENTRAL SIERRA
Continuum
of CARE

209-223-1485 x263

209-533-1397 x251

CentralSierraCoC.org

Amador, Calaveras, Mariposa and Tuolumne Counties

Working together to promote a community-wide commitment to the goal of ending homelessness in the Central Sierra Foothills

February 14, 2023

RE: Letter of Support for Encampment Resolution Funds

To Whom It May Concern:

Please accept this letter of support for Tuolumne County in their request for Encampment Resolution Funds. Tuolumne County has been an integral part of our Central Sierra Continuum of Care (CSCoC) and has a seat on our Governing Board. They attend Governing Board meetings and Committee meetings on a regular basis.

The Encampment Resolution Funding was discussed by an all-counties meeting on January 12, 2023 where each county was represented and provided information regarding this project. It was decided, due to the geographic nature of our CSCoC, each county should apply on their own but with continuous communication through the CSCoC membership.

The Encampment Resolution Funding is on the Agenda of the CSCoC Governing Board meeting set for February 22, 2023 to share progress of those counties applying for the funding.

Tuolumne County Encampment Resolution Funding project fits with the CSCoC goals for preventing and eliminating homelessness in our four (4) county region: Amador, Calaveras, Mariposa and Tuolumne.

Our CSCoC supports this request for funding and asks that you accept and fund their proposal.

Sincerely,

Dr. PJ Davis
CSCoC Coordinator
Pjdavis47@yahoo.com
707-36507046



February 15, 2023

Re: Encampment Resolution Funds Round 2

To Whom It May Concern:

Many people think of homelessness as a largely urban issue but rural California communities are also facing a crisis in the growing number of unsheltered people who need support.

Using the Point In Time (PIT) count, HUD tells us there were 580,466 unsheltered people in the US in 2020. In California the number was 161,548 – the most of any state, just over one-third of all unsheltered people in the US are in California. With a population of 39,437,610, that's a homeless rate of 40.9 people per 10,000. Much has been made recently of the increase of unsheltered people in Sacramento County, where the number has ballooned to 9,300. With a population of 1.6 million people that's a rate of 58.1 people without shelter per 10,000. In 2019 (the most recent pre-pandemic count) the PIT count in Tuolumne County was 385, with a population of 55,620 that's an unsheltered rate of 69.2 per 10,000. We are much higher than the state average or the crisis number in Sacramento that has been garnering so much attention.

We need innovative and consistent solutions, starting with housing and support services. Resiliency Village supports Tuolumne County's efforts to increase housing capacity through the development of the Navigation Center & Distributive Housing program. Many of the people who were displaced in Caltrans encampment resolution efforts in the Summer of 2022 are still homeless. We are asking for your support and funding to restore human dignity and increase the health and safety of our community.

Sincerely,

Mark Dyken
Executive Director



Administration

1000 Greenley Road
Sonora, CA 95370
AdventistHealth.org

February 17, 2023

To whom it may concern,

The increase in the number of families and individuals experiencing homelessness in Tuolumne County has reached a level of grave concern. As a county with a large geographic area, there are many obstacles and challenges for our community members to access resources that include housing assistance, emergency housing, and case management. This creates a barrier that prevents people from obtaining a life of health and self-sufficiency. As the largest provider of health care in Tuolumne County, we can see first-hand the impacts homelessness has on physical and mental health conditions. Adventist Health Sonora wholeheartedly supports the development of a Navigation Center & Distributive Housing Program by the Tuolumne County local government and submit this letter of support in the hopes funding will be provided toward this effort. Providing these resources is the most urgent need in addressing the growing challenges facing our community members.

Thank you for your consideration.

Michelle Fuentes
President

E-mail Template for Level 2 Encampment After-Action Report

TO: HQEncampments@dot.ca.gov

CC: District Director

SUBJECT: Level 2 Report – Location: **WB Hwy 108, PM 15.5 at Wigwam Rd, Jamestown, Tuolumne Co**

ATTACHMENTS: Photo(s), Screenshot of location on map

BODY: Caltrans District _10__ identified a level 2 encampment of approximately **4-5** people located at (**WB Hwy 108, PM 15.5 at Wigwam Rd, Jamestown, Tuolumne Co**). The posting date was done on **7/7/22**.

1. Our priority assessment identified the encampment as a high priority, level 2 encampment due to the following factors:

Explain the safety concerns, how and when the district became aware of the situation, and why the encampment was removed at this time.

Potential risks to camper and/or community, Encampment adjacent to highway with limited sight distance and can only be accessed from shoulder or areas where an errant driver could enter encampment or strike individuals. Encampment is causing a major distraction to drivers, Encampments with abandoned truck bed overhead camper, motorcycle frames, excessive trash, debris, risks to human life and safety. Fires, unsafe heating equipment, or other highly combustible materials, potential to start forest fires. This may include significant accumulation of needles, drug paraphernalia, feces, or other biohazards.

If emergency work must be performed as a result of the encampment, • What needs to be done/repaired? **State Property Signage was installed.**

- What exclusionary measures are we considering? **State Property Signage, Mazeep routine patrols.****
- Is the district submitting a Director's Order to request assistance with funding the repairs and/or exclusionary measures? **No****
- Was the contractor prepared to begin work as soon as the encampment area was cleared? **Yes, American Integrated Services 10A2350****
- What was the encampment completion date/time? **7/12/22, 12:00 Noon****

2. Did Caltrans work in coordination with **(list participating partners including):** **CHP, Local Fire, CAL FIRE, Local Police, Social Services Providers, advocates, etc. The Following Partners were involved: CHP, Sonora PD, City of Sonora, Tuolumne Sheriff's Department, Tuolumne County Animal Control, Local Fire, CalFire, ATCAA (Amador Tuolumne Community Action Agency), Lambert House, Tuolumne County Behavioral Health, The Sonora Washington Street Shelter, Nancy's Hope, Tuolumne County Health and Human Services Agency and others.**

Was outreach performed by local partners on homelessness:

Has outreach been performed at the encampment site within the past 30 days? If so, how many times? **Yes, attempts were made multiple times starting a month prior to posting and continued after the posting date 7/7/22.**

- How many people were offered services and was anyone relocated to a local shelter, motel, or other site? **Everyone present at this encampment was offered services, the remaining person at this site was one of the 12-16 that accepted hotel stays and additional services from HHSA.****

• How many people do we believe remain at the encampment site today? 0

- Has an encampment closure plan been considered and attempted in coordination with local partners? Please explain... An outreach plan was developed and implemented prior to the closure of this encampment. The plan included the following actions:
 - Prior to HHSA outreach efforts, City will inform the homeless campsites located on Stockton Street, Wigwam, and along Woods Creek about the upcoming July 11th Caltrans clean up
 - After City notifies the homeless campsites, HHSA staff will conduct outreach efforts at all three sites on July 6, 8, and 11th approximately one hour at each site per day
 - Outreach efforts include connecting campers to public assistance, mental health, substance use services, and coordinate with ATCAA for hotel room availability
 - ATCAA will contact hotels and provide very limited case management
 - ATCAA will support up to \$10,000 in hotel expenses
 - Transportation is unavailable by HHSA or ATCAA
 - Law enforcement support from PD and/or CHP while HHSA staff is at each homeless campsite
 - Caltrans will post 72 hour notice at each site on July 7th
 - Caltrans will begin homeless camp clean up on July 11th
 - City will contact Animal Control for possible

3. The district is taking the following steps after clearing the encampment site to prevent recurrence: (reinforcing fencing/access doors, installing k-rail/fencing, implementing community-centered projects, requesting increased enforcement from CHP, etc.).

Continued Mazeep patrols. Installed State Property signs.

4. Any other pertinent information related to the encampment or request. Approximately 80 yards of trash/debris and one abandoned vehicle hauled away from site.

(Signature) *Tina Daniels*

Name Tina Daniels

Title Maintenance Area Superintendent Encampment Specialist

District 10

Cell Phone Number 209-986-6022

--- End of Request

Map

Satellite



wam Rd

Wigwa

Wigwam Rd

Wigwam Rd

Wigwam Rd

Woods Creek

Woods Creek

108

49

Google



E-mail Template for Level 2 Encampment After-Action Report

TO: HQEncampments@dot.ca.gov

CC: District Director

SUBJECT: Level 2 Report – Location: **NB Hwy 49, West Stockton St. PM 16.9, Sonora, Tuolumne Co**

ATTACHMENTS: Photo(s), Screenshot of location on map

BODY: Caltrans District 10 identified a level 2 encampment of approximately 12 people located at (**NB Hwy 49, West Stockton St. PM 16.9, Sonora, Tuolumne Co**). The posting date was done on 7/7/22.

1. Our priority assessment identified the encampment as a high priority, level 2 encampment due to the following factors:

Explain the safety concerns, how and when the district became aware of the situation, and why the encampment was removed at this time.

Potential risks to camper and/or community, encampment adjacent to highway with limited sight distance and can only be accessed from shoulder or areas where an errant driver could enter encampment or strike individuals. Encampment is causing a major distraction to drivers, increased animals entering roadway, encampments with, excessive trash, debris, risks to human life and safety. Fires, unsafe heating equipment, or other highly combustible materials, potential to start forest fires. This may include significant accumulation of needles, drug paraphernalia, feces, or other biohazards. In or adjacent to an active construction zone.

If emergency work must be performed as a result of the encampment, • What needs to be done/repaired? Emergency services from CalFire were required. Dozer, Airdrop applied fire retardant and ground crews were required at this site to extinguish a "suspicious" forest fire at the northern end of this encampment. Mop up crews worked on site. Emergency road closure of highway 49 7/12/2022. State Property Signage was installed. Additional day of clearing from Contracted AIS. Additional overnight Mazeep watch to prevent additional vandalism and/or arson.

- What exclusionary measures are we considering? State Property Signs, Mazeep routine patrols.
- Is the district submitting a Director's Order to request assistance with funding the repairs and/or exclusionary measures?
- Was the contractor prepared to begin work as soon as the encampment area was cleared? Yes, American Integrated Services 10A2350
- What was the encampment completion date/time? 7/15/22, 14:30

2. Did Caltrans work in coordination with (*list participating partners including*): CHP, Local Fire, CAL FIRE, Local Police, Social Services Providers, advocates, etc. The Following Partners were involved: CHP, Sonora PD, City of Sonora, Tuolumne Sheriff's Department, Tuolumne County Animal Control, Local Fire, CalFire, ATCAA, Lambert House, Tuolumne County Behavioral Health, The Sonora Washington Street Shelter, Nancy's Hope, Tuolumne County Health and Human Services Agency and others.

Was outreach performed by local partners on homelessness:

Has outreach been performed at the encampment site within the past 30 days? If so, how many times? Yes, attempts were made multiple times starting a month prior to posting and continued after the posting date 7/7/22.

- How many people were offered services and was anyone relocated to a local shelter, motel, or other site? Everyone present at this encampment was offered services, it is unknown which of the people at this site were of the 12-16 that accepted hotel stays and additional services from HHSa.

• How many people do we believe remain at the encampment site today? 0

- Has a encampment closure plan been considered and attempted in coordination with local partners? Please explain. An outreach plan was developed and implemented prior to the closure of this encampment. The plan included the following actions:
 - Prior to HHSa outreach efforts, City will inform the homeless campsites located on Stockton Street, Wigwam, and along Woods Creek about the upcoming July 11th Caltrans clean up
 - After City notifies the homeless campsites, HHSa staff will conduct outreach efforts at all three sites on July 6, 8, and 11th approximately one hour at each site per day
 - Outreach efforts include connecting campers to public assistance, mental health, substance use services, and coordinate with ATCAA for hotel room availability
 - ATCAA will contact hotels and provide very limited case management
 - ATCAA will support up to \$10,000 in hotel expenses
 - Transportation is unavailable by HHSa or ATCAA
 - Law enforcement support from PD and/or CHP while HHSa staff is at each homeless campsite
 - Caltrans will post 72 hour notice at each site on July 7th
 - Caltrans will begin homeless camp clean up on July 12th
 - City will contact Animal Control for possible support

3. The district is taking the following steps after clearing the encampment site to prevent recurrence: (reinforcing fencing/access doors, installing k-rail/fencing, implementing community-centered projects, requesting increased enforcement from CHP, etc.).

A property line survey is being completed by Caltrans District 10 Surveys Division to establish the property line so that CHP can provide increased enforcement to deter future resettlement of this area. The city of Sonoma has implemented a series of ordinances to reduce camping in the city limits. City police have an agreement with adjacent landowner to enforce no trespassing on the adjacent land which will help us better manage the area.

4. Any other pertinent information related to the encampment or request. Approximately 240 yards of trash/debris hauled away from site. Multiple chickens, chicks, cats and kittens placed into foster through Animal Control.

(Signature) *Tina Daniels*

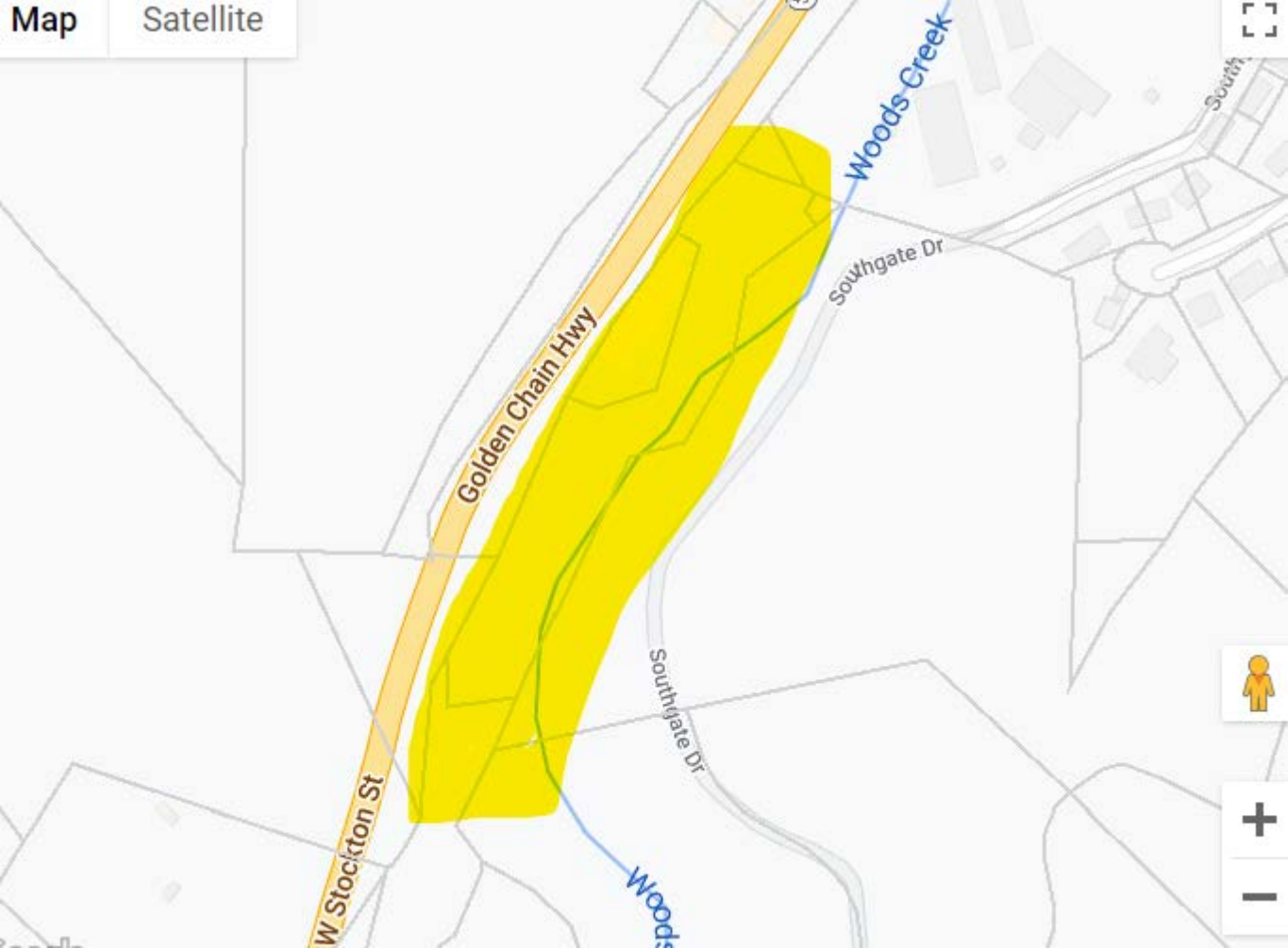
Name Tina Daniels

Title Maintenance Area Superintendent Encampment Specialist

District 10

Cell Phone Number 209-986-6022

--- End of Request



W Stockton St

Golden Chain Hwy

Woods Creek

Southgate Dr

Southgate Dr

Woods



E-mail Template for Level 2 Encampment After-Action Report

TO: HQEncampments@dot.ca.gov

CC: District Director

SUBJECT: Level 2 Report – Location: **WB/EB Hwy 108, PM 2.8 at Sullivan Creek, Tuolumne Co.**

ATTACHMENTS: Photo(s), Screenshot of location on map

BODY: Caltrans District 10 identified a level 2 encampment of approximately **4-5** people located at (**WB/EB Hwy 108, PM 2.8 at Sullivan Creek, Tuolumne Co.**). The posting date was done on **10/18/22**.

1. Our priority assessment identified the encampment as a high priority, level 2 encampment due to the following factors:

Explain the safety concerns, how and when the district became aware of the situation, and why the encampment was removed at this time.

Potential risks to camper and/or community, Encampment adjacent to highway with limited sight distance and can only be accessed from shoulder or areas where an errant driver could enter encampment or strike individuals. Encampment is causing a major distraction to drivers, Encampments with abandoned truck bed overhead camper, motorcycle frames, excessive trash, debris, risks to human life and safety. Fires, unsafe heating equipment, or other highly combustible materials, potential to start forest fires. This may include significant accumulation of needles, drug paraphernalia, feces, or other biohazards.

If emergency work must be performed as a result of the encampment, • What needs to be done/repaired? **State Property Signage was installed.**

- **What exclusionary measures are we considering? **State Property Signage, Mazeep routine patrols.****
- **Is the district submitting a Director’s Order to request assistance with funding the repairs and/or exclusionary measures? **No****
- **Was the contractor prepared to begin work as soon as the encampment area was cleared? **Clean up was done by Caltrans Maintenance Crew****
- **What was the encampment completion date/time? **10/20/22, 12:00 Noon****

2. Did Caltrans work in coordination with **(list participating partners including):** **CHP, Local Fire, CAL FIRE, Local Police, Social Services Providers, advocates, etc. The Following Partners were involved: CHP, Sonora PD, City of Sonora, Tuolumne Sheriff’s Department, Tuolumne County Animal Control, Local Fire, CalFire, ATCAA (Amador Tuolumne Community Action Agency), Lambert House, Tuolumne County Behavioral Health, The Sonora Washington Street Shelter, Nancy’s Hope, Tuolumne County Health and Human Services Agency and others.**

Was outreach performed by local partners on homelessness:

Has outreach been performed at the encampment site within the past 30 days? If so, how many times? **Outreach did not notify me of any attempts.**

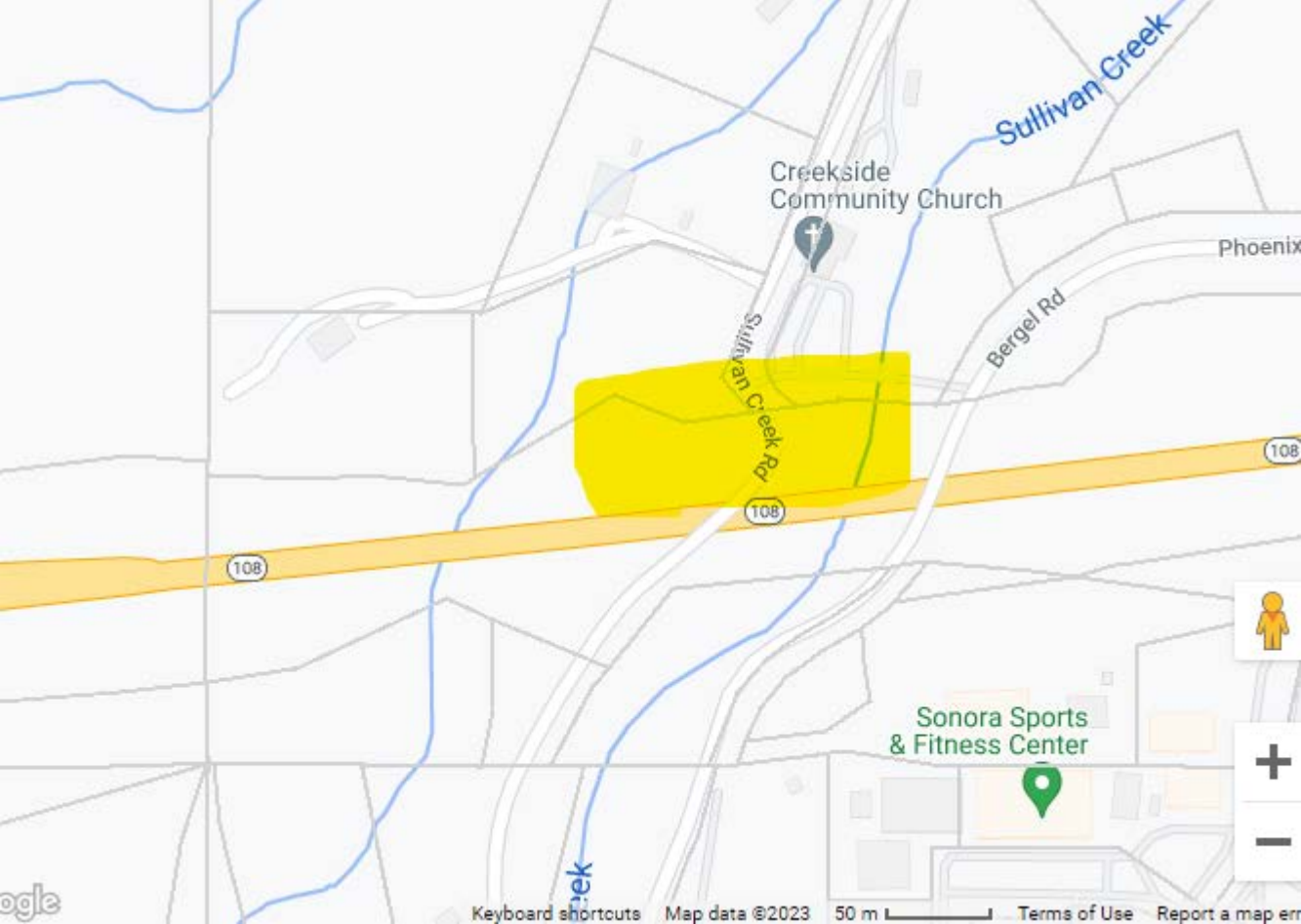
- How many people were offered services and was anyone relocated to a local shelter, motel, or other site? **I was not notified by Outreach**
- **How many people do we believe remain at the encampment site today? **0****

- Has an encampment closure plan been considered and attempted in coordination with local partners? Please explain... An outreach plan was developed and implemented prior to the closure of this encampment. The plan included the following actions:
 - Prior to HHSa outreach efforts, City will inform the homeless campsites located on Stockton Street, Wigwam, and along Woods Creek about the upcoming July 11th Caltrans clean up
 - After City notifies the homeless campsites, HHSa staff will conduct outreach efforts at all three sites on July 6, 8, and 11th approximately one hour at each site per day
 - Outreach efforts include connecting campers to public assistance, mental health, substance use services, and coordinate with ATCAA for hotel room availability
 - ATCAA will contact hotels and provide very limited case management
 - ATCAA will support up to \$10,000 in hotel expenses
 - Transportation is unavailable by HHSa or ATCAA
 - Law enforcement support from PD and/or CHP while HHSa staff is at each homeless campsite
 - Caltrans will post 48 hour notice at each site on October 18th
 - Caltrans will begin homeless camp clean up on October 20th
 - City will contact Animal Control for possible strays

3. The district is taking the following steps after clearing the encampment site to prevent recurrence: (reinforcing fencing/access doors, installing k-rail/fencing, implementing community-centered projects, requesting increased enforcement from CHP, etc.).
Continued Mazeep patrols. Installed State Property signs.

4. Any other pertinent information related to the encampment or request. Approximately 40 yards of trash/debris and one abandoned vehicle hauled away from site.

(Signature) 
Name James Perez
Title Maintenance Area Superintendent Encampment Specialist
District 10
Cell Phone Number 209-986-6022
--- End of Request



Sullivan Creek

Creekside Community Church

Phoenix

Bergel Rd

Sullivan Creek Rd

108

108

Sonora Sports & Fitness Center

Google

Keyboard shortcuts

Map data ©2023

50 m

Terms of Use

Report a map error

E-mail Template for Level 1 Encampment After-Action Report

TO: HQEncampments@dot.ca.gov

CC: District Director, Alisa Becerra, Ron Richardson,

HQencampments@dot.ca.gov

SUBJECT: Level 1 Report – Location: (HWY 49/Mill Villa CT PM 16.8 Sonora, Tuolumne County)

ATTACHMENTS: Photo(s), Screenshot of location on map

BODY: Caltrans District 10 has identified and removed an encampment of approximately 1 person located at HWY 49/Mill Villa CT PM 16.8 Sonora, Tuolumne County at 12:30 pm on 9/15/2022.

1. Our priority assessment identified the encampment as a critical priority, level 1 encampment due to the following factors:

Briefly Explain: We became aware of the camper in this location when we got a call from CHP on 9/15/2022 about the unsafe location of the camp. The camper was in a location that one wrong step could cause a approximately 25 foot fall into traffic on the highway on one side and approximately a 30 foot fall of the opposite side of a almost vertical cliff. The rocky terrain and unstable footing makes this a very dangerous location.

- If emergency work was/is being performed on the infrastructure:
- What is being done?
- What was the start date/time and what is the anticipated completion date? 9/15/2022 12:30PM

2. Caltrans removed the encampment in coordination with *(list participating partners, including: CHP, Local Fire, CAL FIRE, Local Police, Social Services Providers, advocates, etc.)*
CHP, Tuolumne County Social Services, and the city of Sonora

Did local outreach partners participate in the removal?

- If so, how many people were offered services? One person was there, they declined any services from Caltrans or the outreach sources.
- Was anyone placed at a local shelter, motel, or other site? No, the person declined any assistance from Caltrans or their outreach sources.

3. The district has taken the following measures to prevent recurrence: (reinforcing fencing/access doors, installing k-rail/fencing, requesting increased enforcement from CHP, etc.)

Increased patrols from CHP in the area to make sure the campers do not return.

4. Any other pertinent information related to the encampment

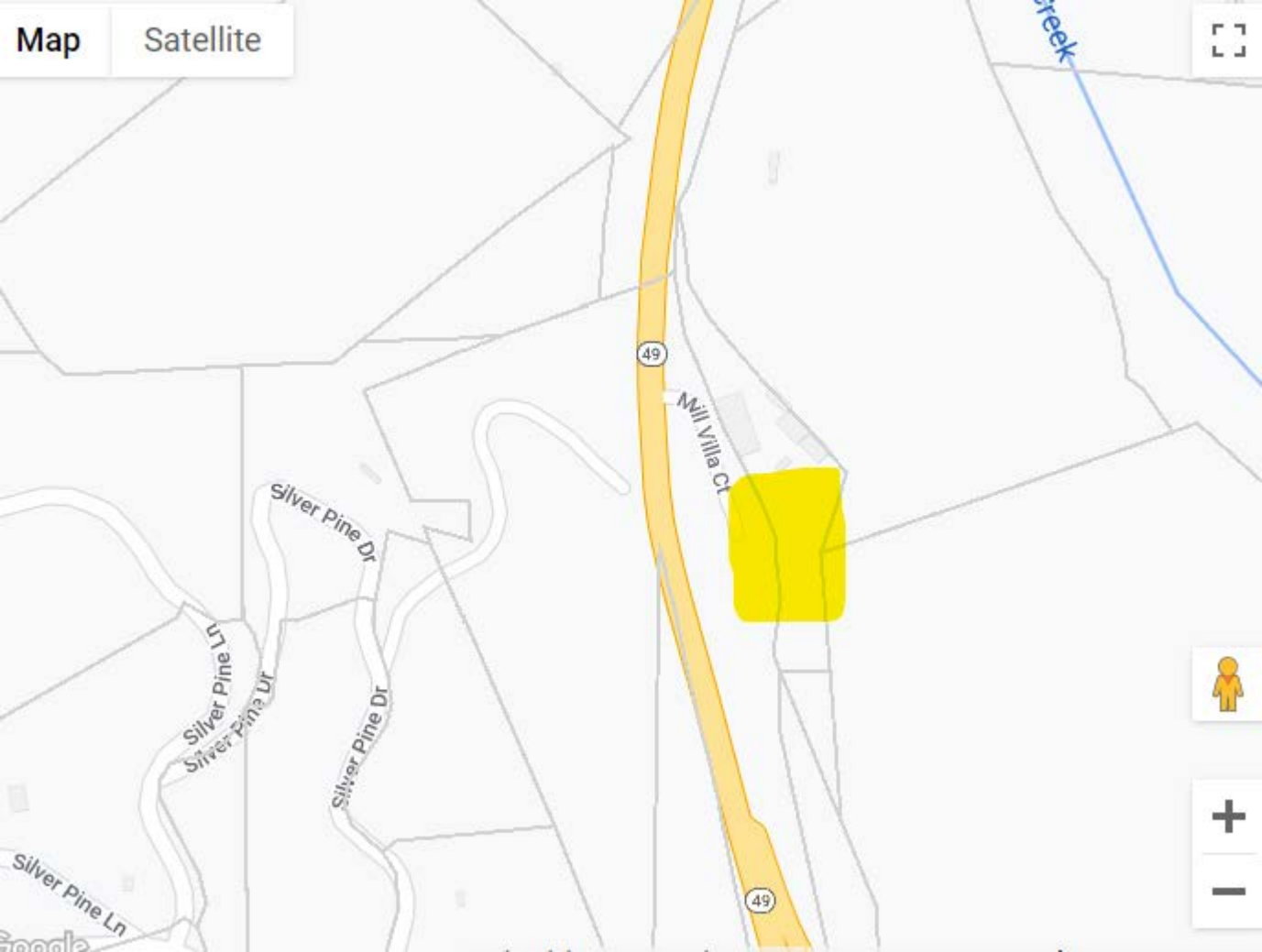
removal. 5 bags of trash was removed.

Tina Daniels 
Encampment Specialist, 209-986-6022

--- End of Report

Map

Satellite



49

Mill Villa Ct

Silver Pine Dr

UT Pine

Silver Pine Ln

Silver Pine Dr

Silver Pine Ln

Google

49



E-mail Template for Level 2 Encampment After-Action Report

TO: HQEncampments@dot.ca.gov

CC: District Director

SUBJECT: Level 2 Report – Location: EB 108/Hwy 49 Off Ramp PM 0.027, Sonora, Tuolumne Co

ATTACHMENTS: Photo(s), Screenshot of location on map

BODY: Caltrans District _10_ identified a level 2 encampment of approximately 2 people located at (EB 108/Hwy 49 Off Ramp PM 0.027, Sonora, Tuolumne Co). The posting date was done on 7/7/22.

1. Our priority assessment identified the encampment as a high priority, level 2 encampment due to the following factors:

Explain the safety concerns, how and when the district became aware of the situation, and why the encampment was removed at this time.

Potential risks to camper and/or community, Encampment adjacent to highway with limited sight distance and can only be accessed from shoulder or areas where an errant driver could enter encampment or strike individuals. Encampment is causing a major distraction to drivers, Encampments with abandoned vehicles, excessive trash, debris, risks to human life and safety. Fires, unsafe heating equipment, or other highly combustible materials, potential to start forest fires. This may include significant accumulation of needles, drug paraphernalia, feces, or other biohazards. Fires, unsafe heating equipment, or other highly combustible materials. In or adjacent to an active construction zone.

If emergency work must be performed as a result of the encampment, • What needs to be done/repaired? Temporary road access was made to clear camp, natural slope was redeveloped after encampment clearing. State Property Signage was installed.

- What exclusionary measures are we considering? State Property Signage, Mazeep routine patrols, wrought iron fencing.
- Is the district submitting a Director's Order to request assistance with funding the repairs and/or exclusionary measures? DO 10-1N620 was approved on 2/16/22 and will provide fencing at this location.
- Was the contractor prepared to begin work as soon as the encampment area was cleared? Yes, American Integrated Services 10A2350
- What was the encampment completion date/time? 7/11/22, 14:30

2. Did Caltrans work in coordination with (list participating partners including): CHP, Local Fire, CAL FIRE, Local Police, Social Services Providers, advocates, etc. The Following Partners were involved: CHP, Sonora PD, City of Sonora, Tuolumne Sheriff's Department, Tuolumne County Animal Control, Local Fire, CalFire, ATCAA, Lambert House, Tuolumne County Behavioral Health, The Sonora Washington Street Shelter, Nancy's Hope, Tuolumne County Health and Human Services Agency and others.

Was outreach performed by local partners on homelessness:

Has outreach been performed at the encampment site within the past 30 days? If so, how many times? Yes, attempts were made multiple times starting a month prior to posting and continued after the posting date 7/7/22.

- How many people were offered services and was anyone relocated to a local shelter, motel, or other site? Everyone present at this encampment was offered services, it is

unknown if people at this site were of the 12-16 that accepted hotel stays and additional services from HHSA.

- How many people do we believe remain at the encampment site today? 0
- Has an encampment closure plan been considered and attempted in coordination with local partners? Please explain... An outreach plan was developed and implemented prior to the closure of this encampment. The plan included the following actions:
 - Prior to HHSA outreach efforts, City will inform the homeless campsites located on Stockton Street, Wigwam, and along Woods Creek about the upcoming July 11th Caltrans clean up
 - After City notifies the homeless campsites, HHSA staff will conduct outreach efforts at all three sites on July 6, 8, and 11th approximately one hour at each site per day
 - Outreach efforts include connecting campers to public assistance, mental health, substance use services, and coordinate with ATCAA for hotel room availability
 - ATCAA will contact hotels and provide very limited case management
 - ATCAA will support up to \$10,000 in hotel expenses
 - Transportation is unavailable by HHSA or ATCAA
 - Law enforcement support from PD and/or CHP while HHSA staff is at each homeless campsite
 - Caltrans will post 72 hour notice at each site on July 7th
 - Caltrans will begin homeless camp clean up on July 11th
 - City will contact Animal Control for possible support

3. The district is taking the following steps after clearing the encampment site to prevent recurrence: (reinforcing fencing/access doors, installing k-rail/fencing, implementing community-centered projects, requesting increased enforcement from CHP, etc.).

Wrought Iron fencing will be installed after the survey crews have completed their work.

4. Any other pertinent information related to the encampment or request. Approximately 80 yards of trash/debris and one abandoned vehicle hauled away from site.

(Signature) *Tina Daniels*

Name Tina Daniels

Title Maintenance Area Superintendent Encampment Specialist

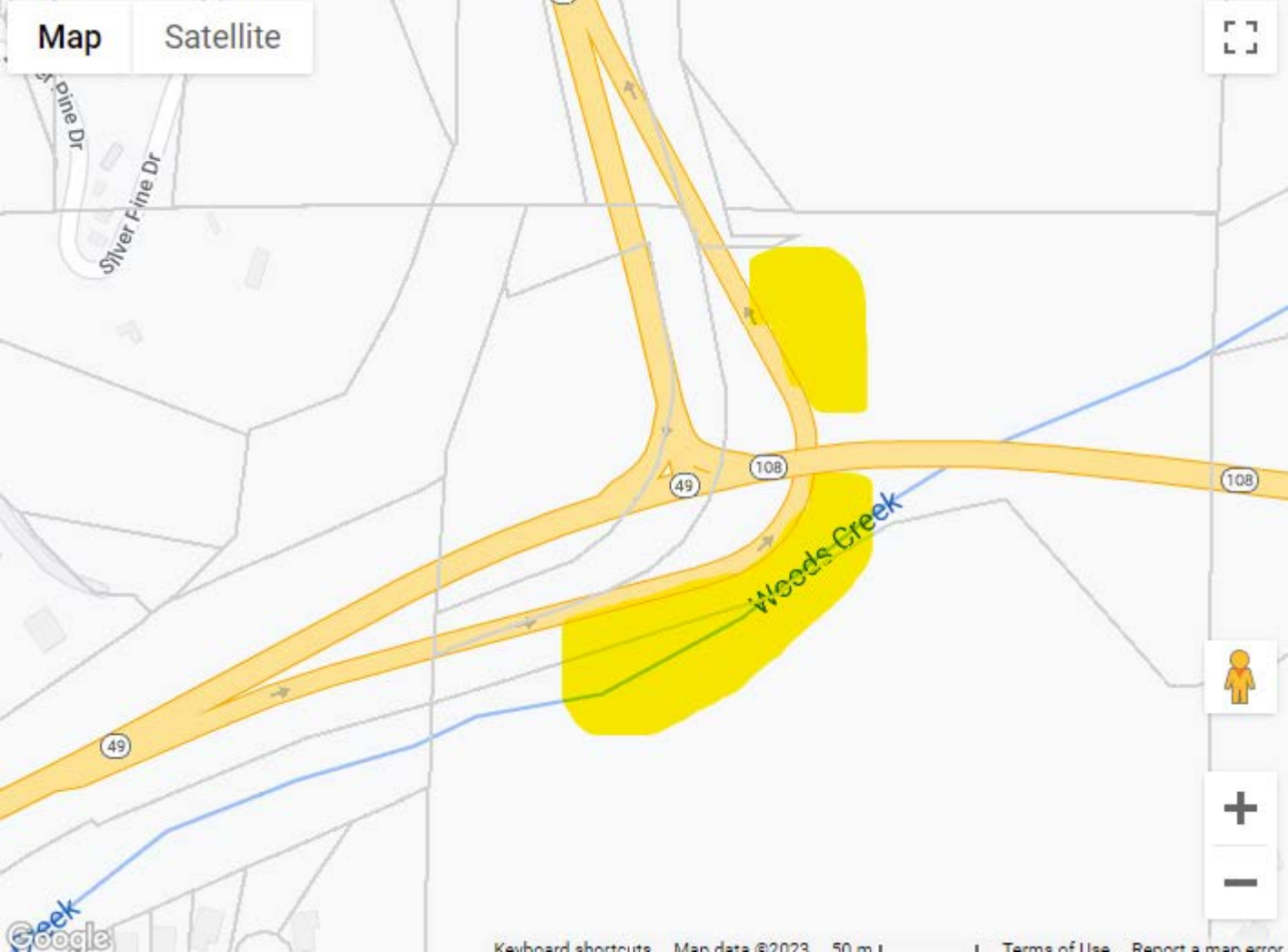
District 10

Cell Phone Number 209-986-6022

--- End of Request

Map

Satellite



49

49

108

108

Woods Creek

Google

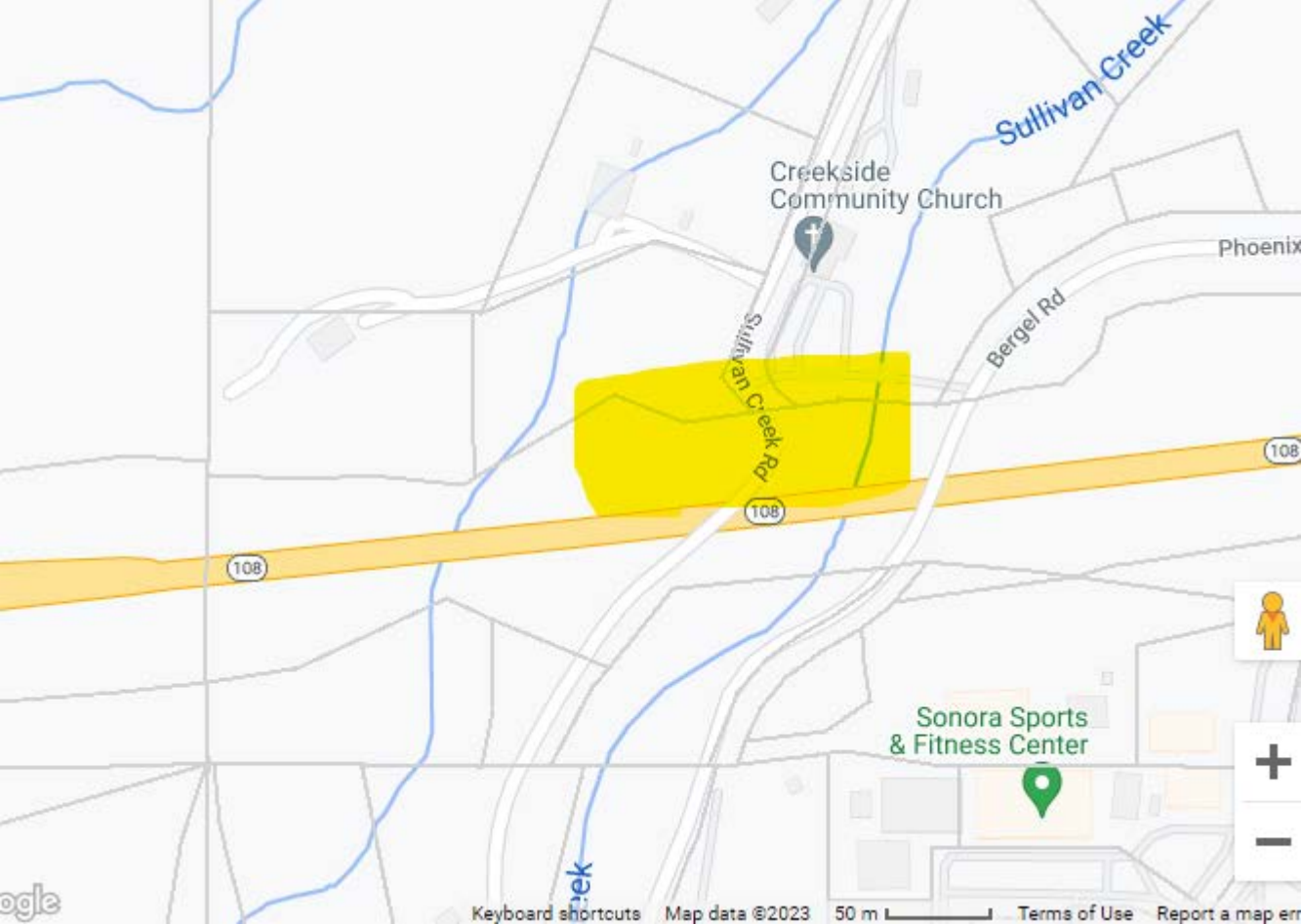
Keyboard shortcuts

Map data ©2023

50 m

Terms of Use

Report a map error



Sullivan Creek

Creekside Community Church

Phoenix

Bergel Rd

Sullivan Creek Rd

108

108

108

Sonora Sports & Fitness Center

Google

Keyboard shortcuts

Map data ©2023

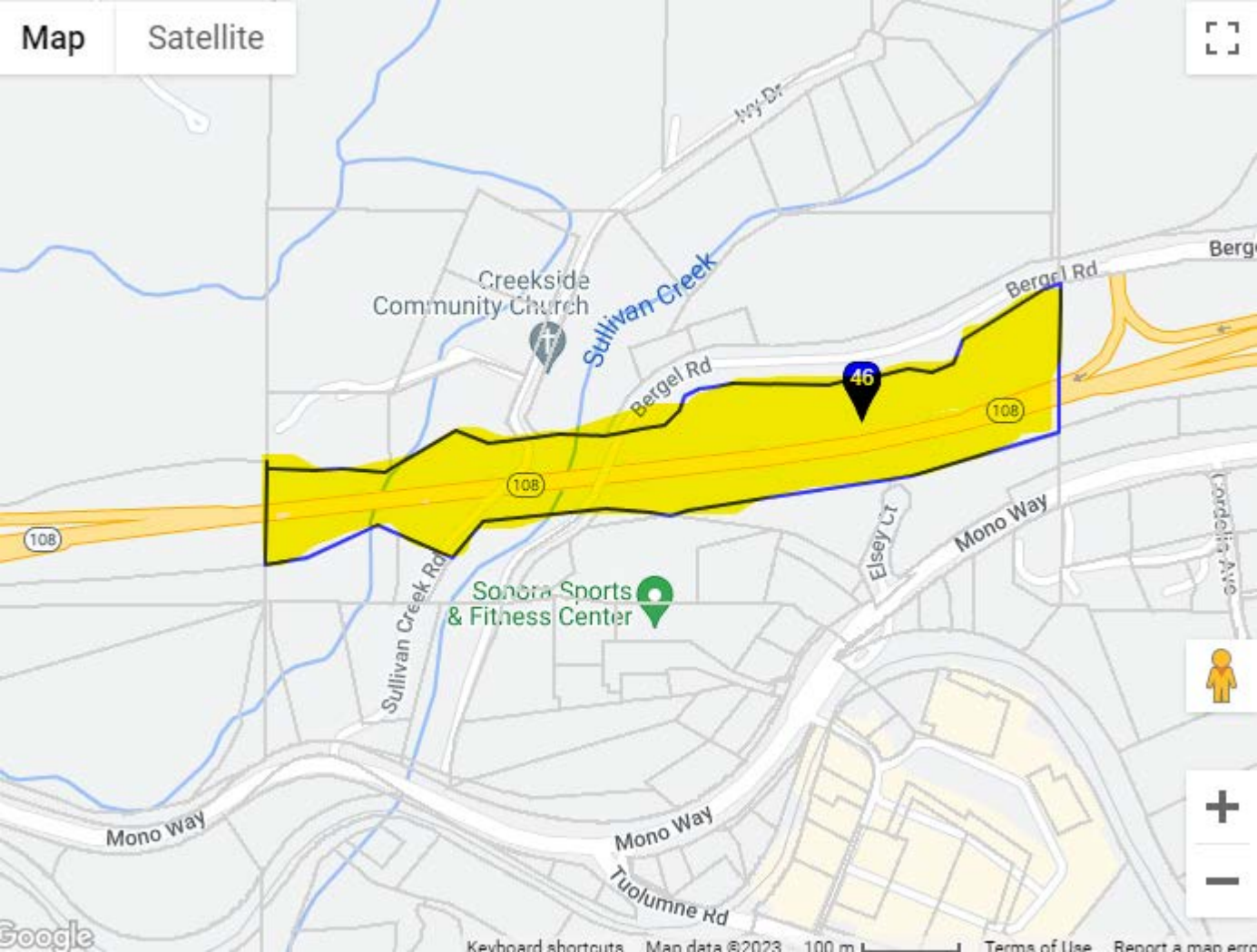
50 m

Terms of Use

Report a map error

Map

Satellite



Creekside Community Church

Sullivan Creek

Bergel Rd

Bergel Rd

Bergel Rd

46

108

108

108

Sonora Sports & Fitness Center

Elsey Ct

Mono Way

Conditella Ave

Mono Way

Mono Way

Tuolumne Rd

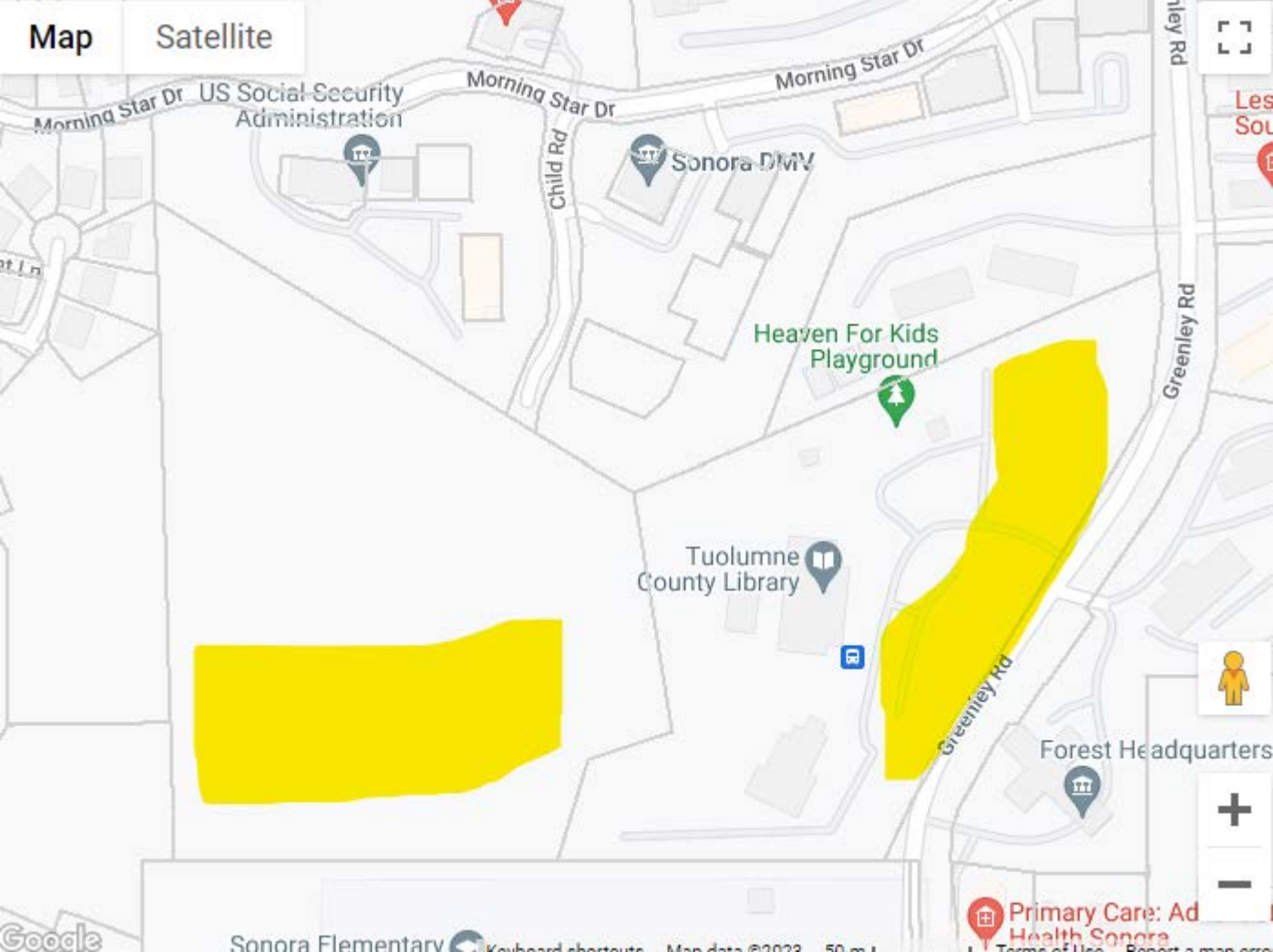
Google

Keyboard shortcuts Map data ©2023 100 m

Terms of Use

Report a map error





Morning Star Dr US Social Security Administration

Morning Star Dr

Morning Star Dr

Child Rd

Sonora DMV

Heaven For Kids Playground

Tuolumne County Library

Greenley Rd

Forest Headquarters

